

develop: IMPROVISE
manage : EQUITY
maintain: PALIMPSEST

Professor Walter Hood

David K Woo Chair in Landscape Architecture and Environmental Planning

2018 Fellow, USC American Academy in C

IMPROVISE





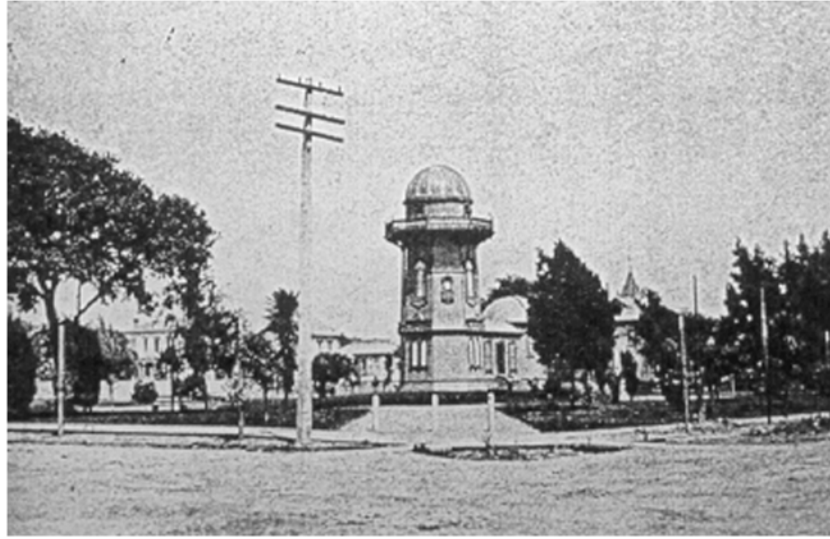








original Chabot Observatory



second Chabot Observatory



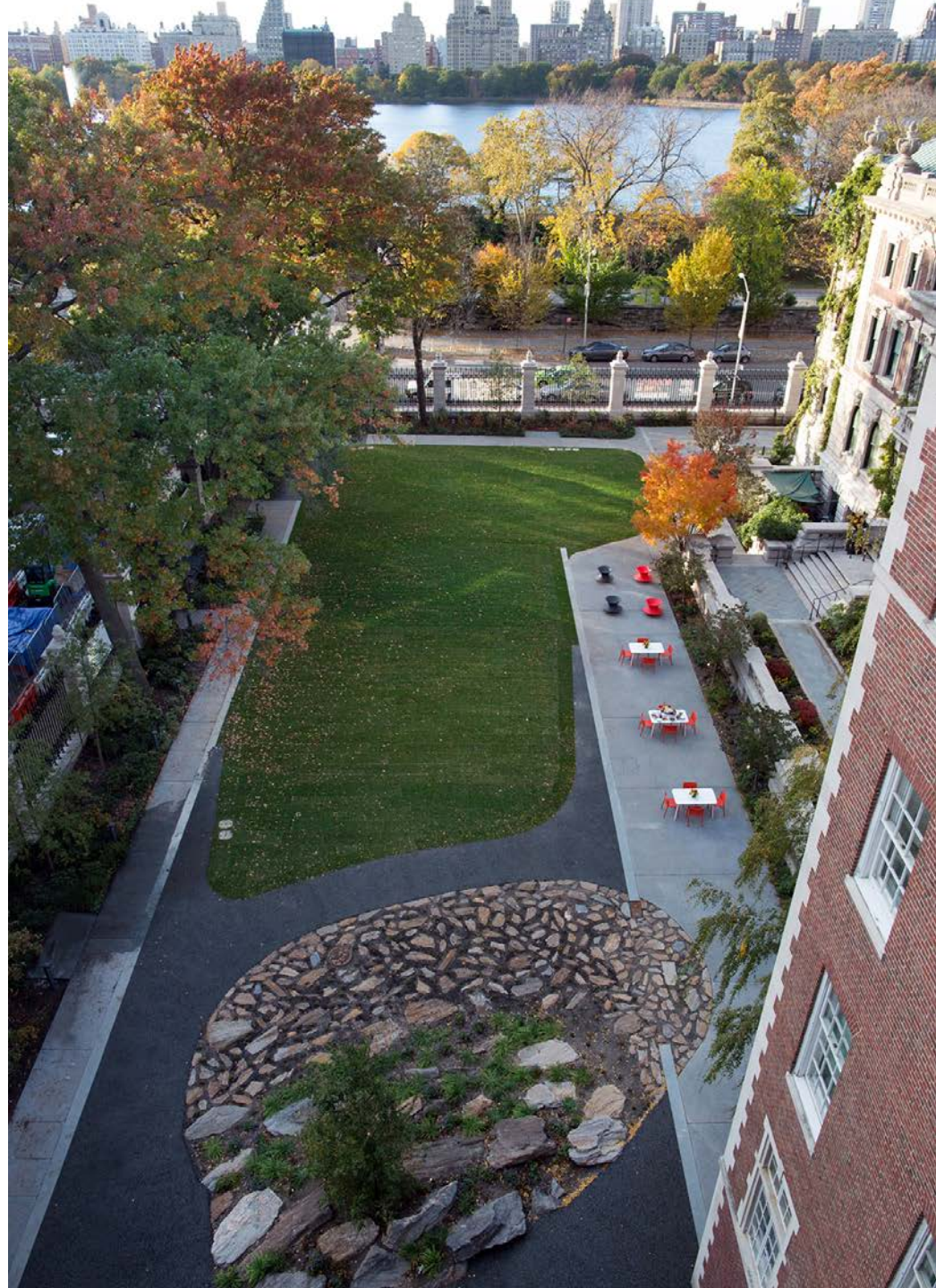
Depression era mixed crowd







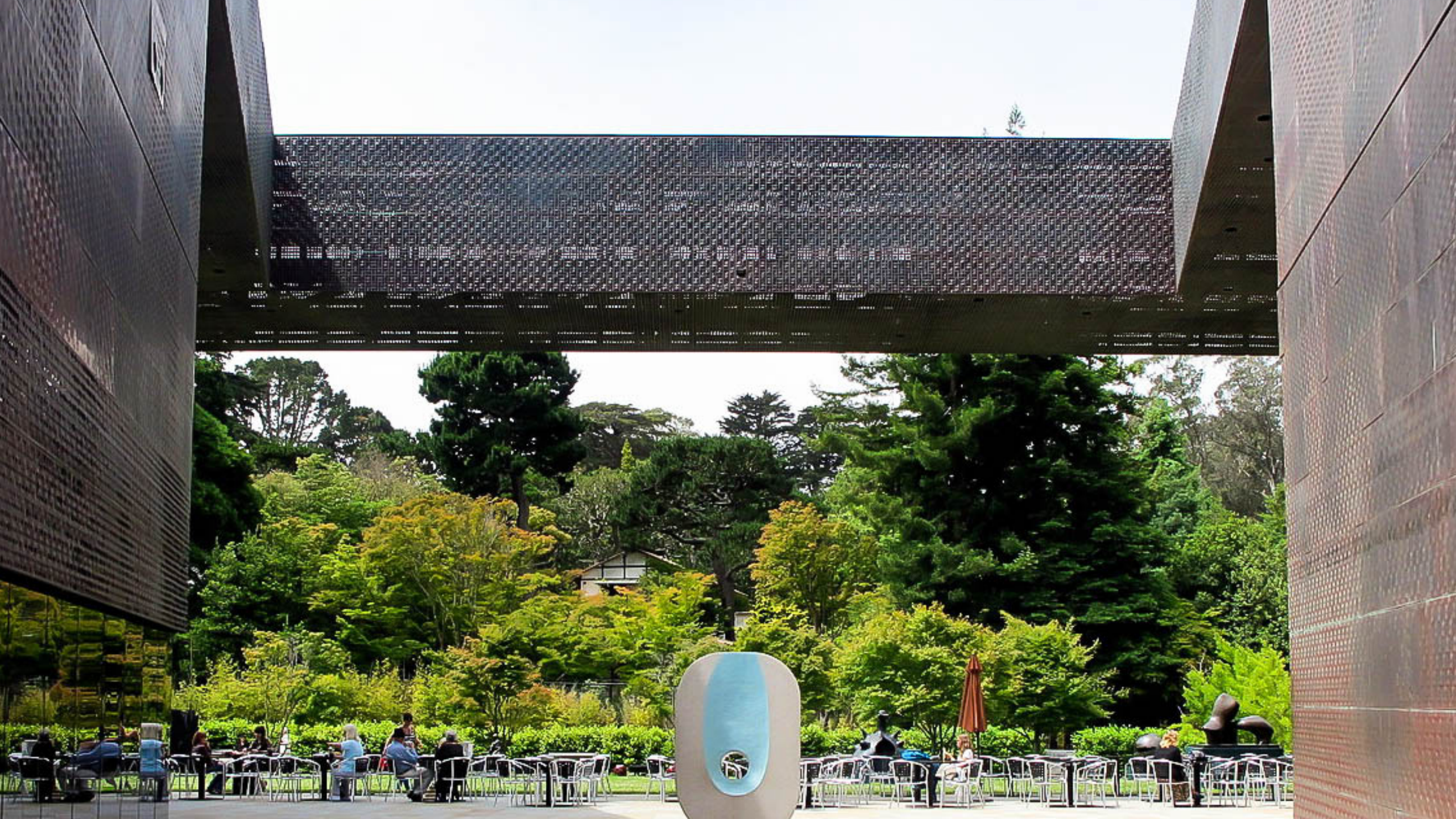




























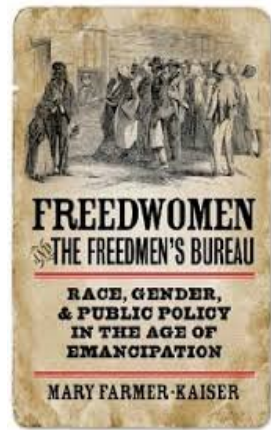


EQUITY

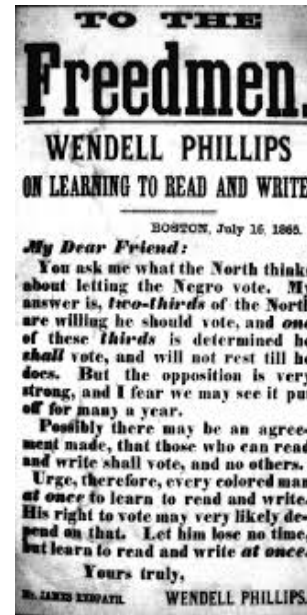
The Six Best "Secret Gardens" Of NYC

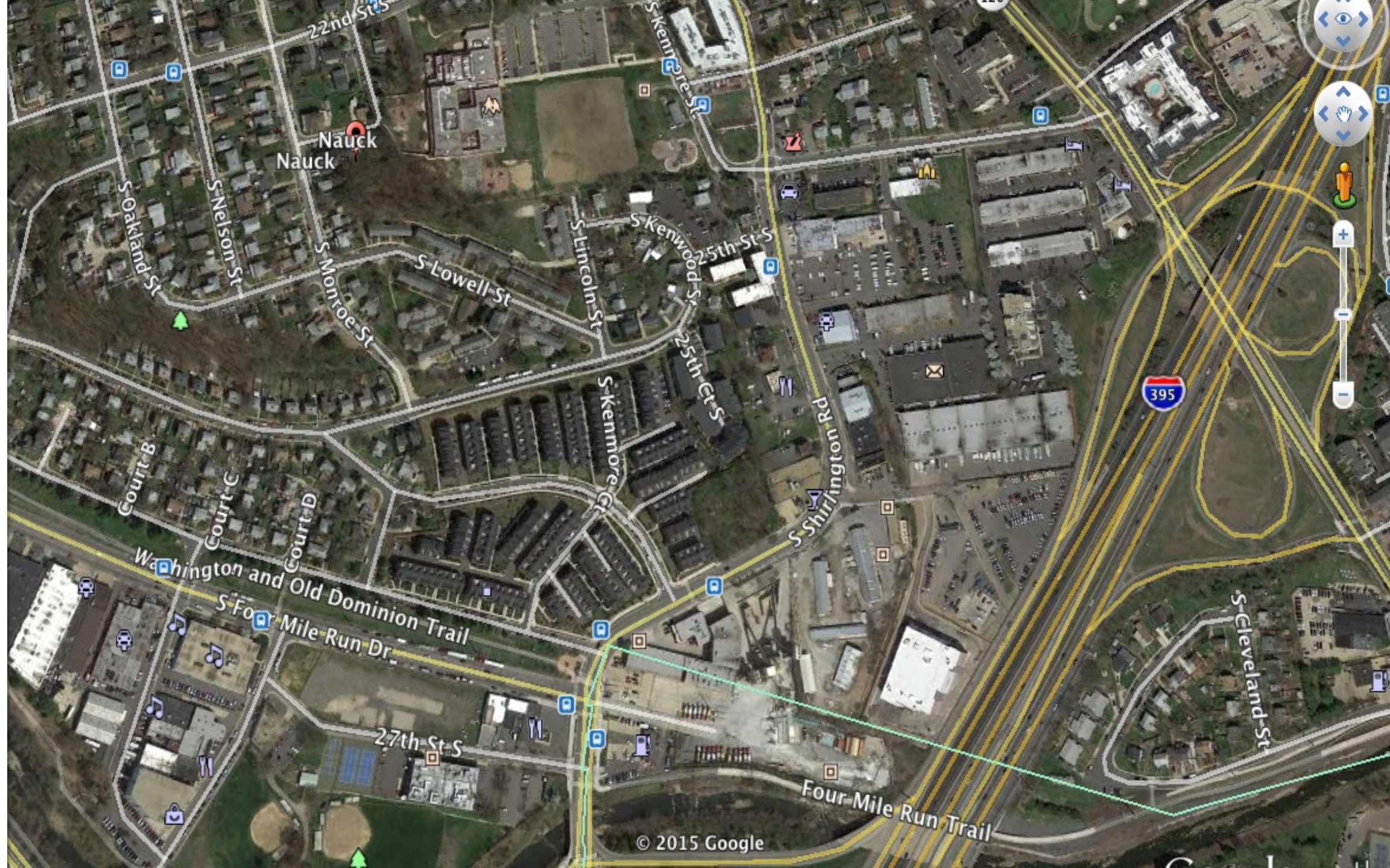






“There is no reason...why the methods of commercial persuasion and the skyline of signs should not serve the purpose of civic and cultural enhancement. But this is not entirely up to the architect.” — Robert Venturi and Denise Scott Brown 1968











"[The Town Square should be] a place to communicate and get to know each other better – not just for the black people of the community, but other groups also. Because we live next to people and don't even know their names... So we can all learn to enjoy each other."

– Rev. Oscar Green, Nauck Community Heritage Project, 2012

Site Plan

5



1. STAGE
2. FREED SCULPTURE
3. BOSQUE
4. BIO-SWALE
5. BIO-RETENTION PLANTER
6. BENCHES
7. CHESS TABLES
8. RAISED METAL WALKWAY
9. SEATWALL
10. LAWN
11. BIO-RETENTION
12. MOVABLE CHAIRS





0001

1844

0001

1844

0001

1844

0001

1844

NAUCK

SARAH ANN JONES

0001

1844

NAUCK

SARAH ANN JONES

0001

1844

NAUCK

SARAH ANN JONES

0001

1844

NAUCK

SARAH ANN JONES

0001

1844

NAUCK

SARAH ANN JONES

0001

1844

NAUCK

SARAH ANN JONES

0001

1844

NAUCK

SARAH ANN JONES

0001

1844

NAUCK

SARAH ANN JONES

0001

1844

NAUCK

SARAH ANN JONES

0001

NAUCK

SARAH ANN JONES

0001

NAUCK

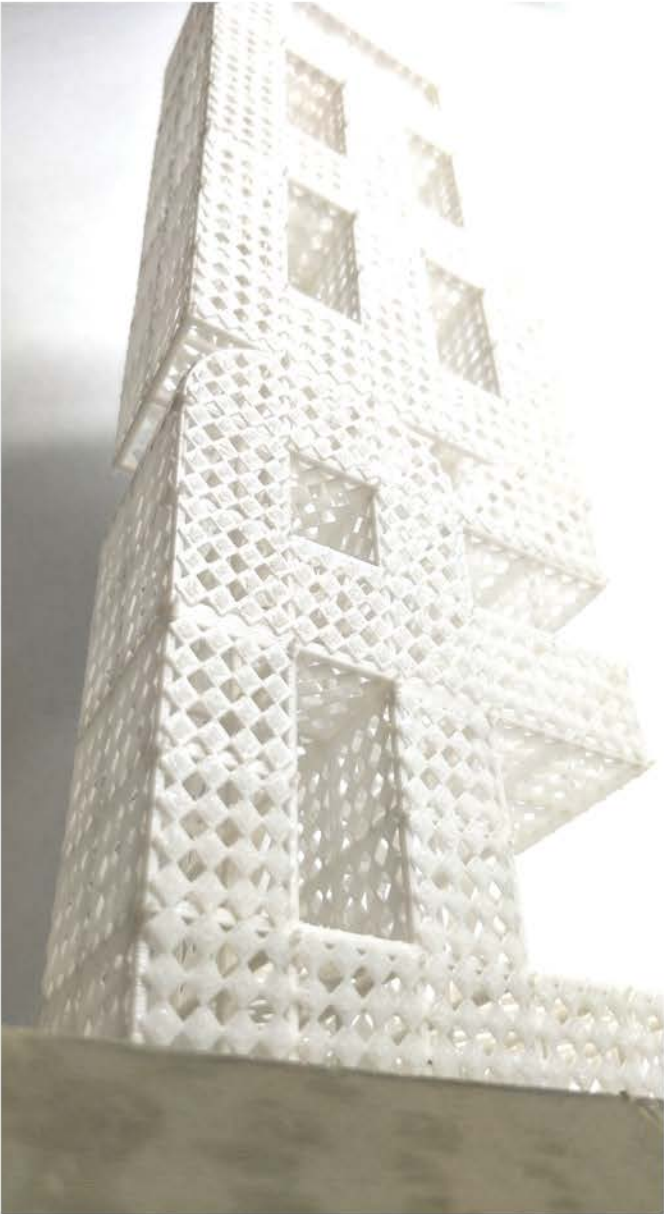
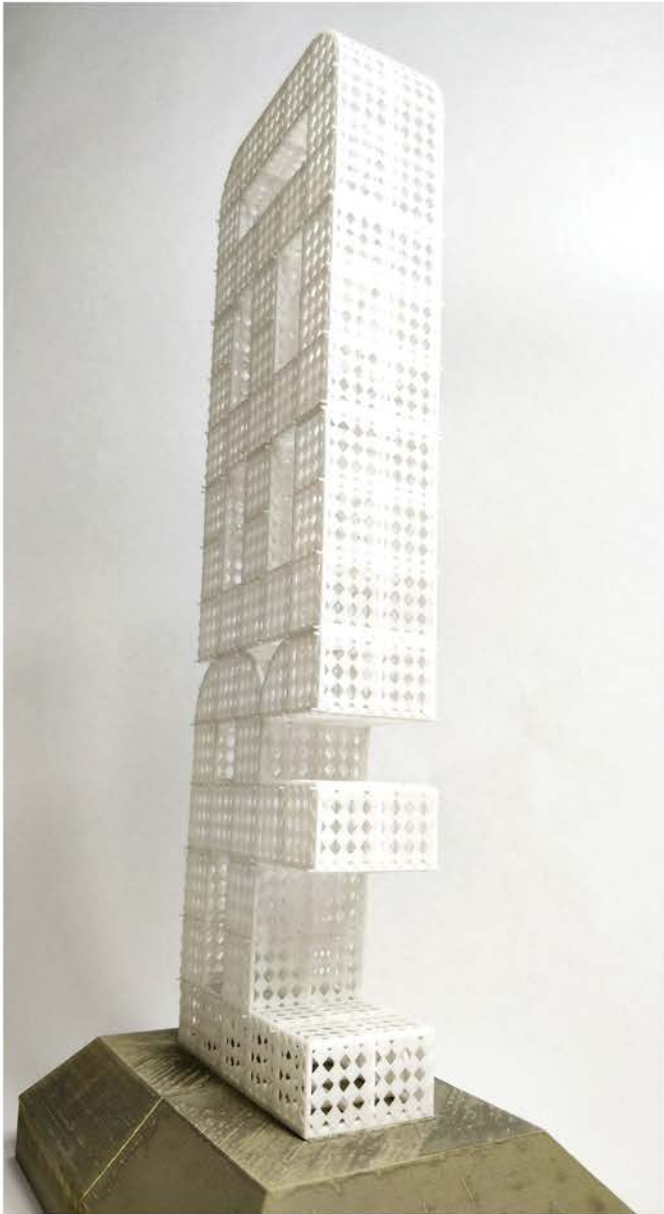
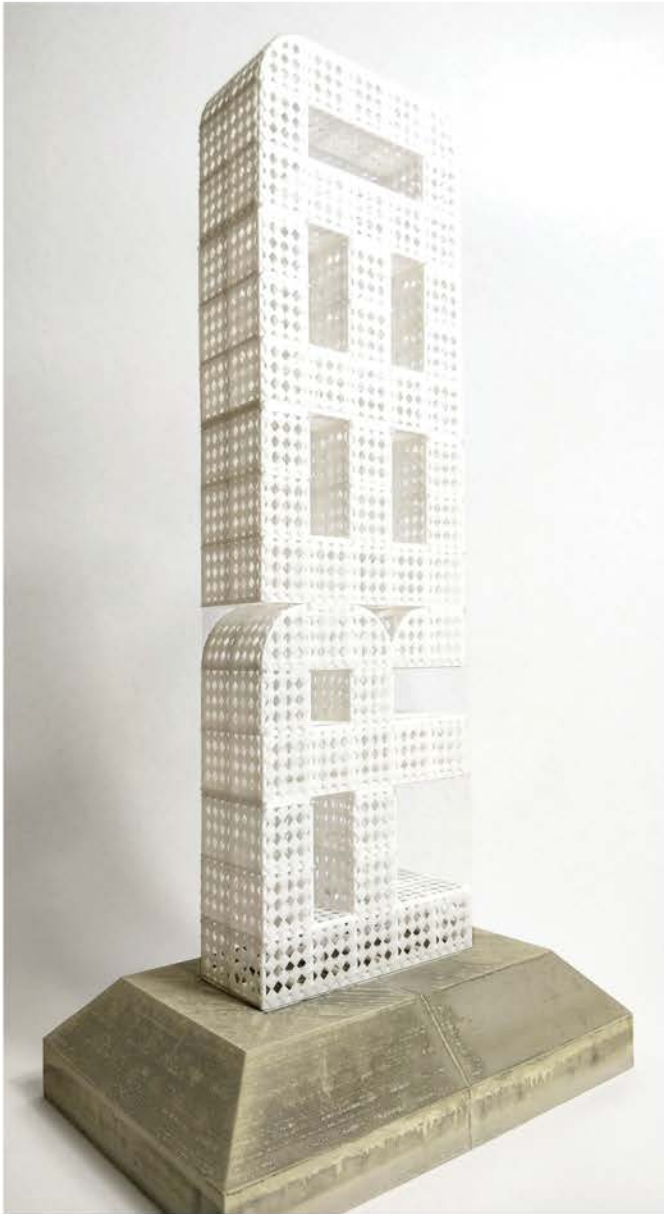
SARAH ANN JONES

0001

NAUCK

SARAH ANN JONES

0001



Looking up to Freed Sculpture

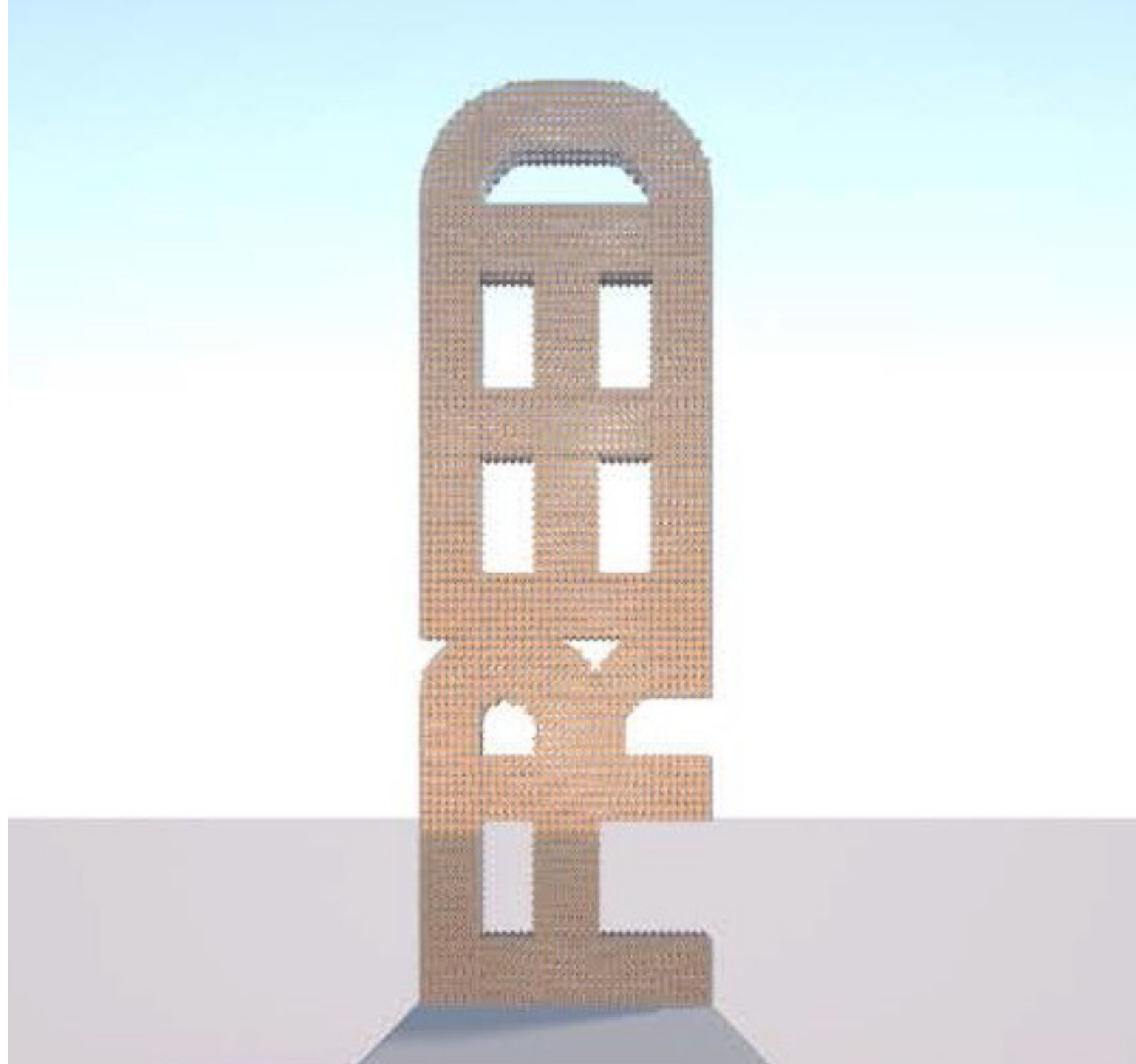












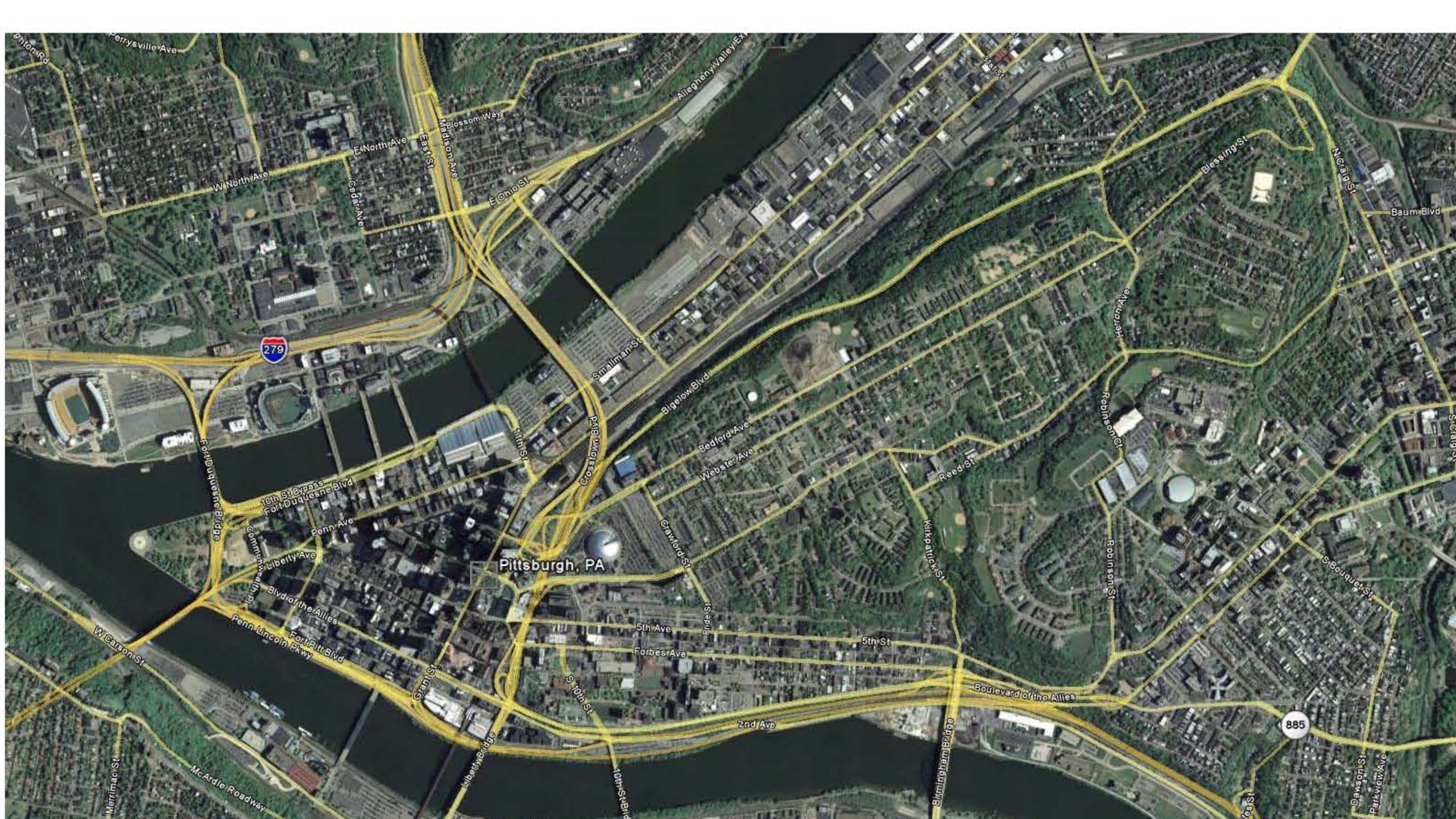
PALIMPSEST



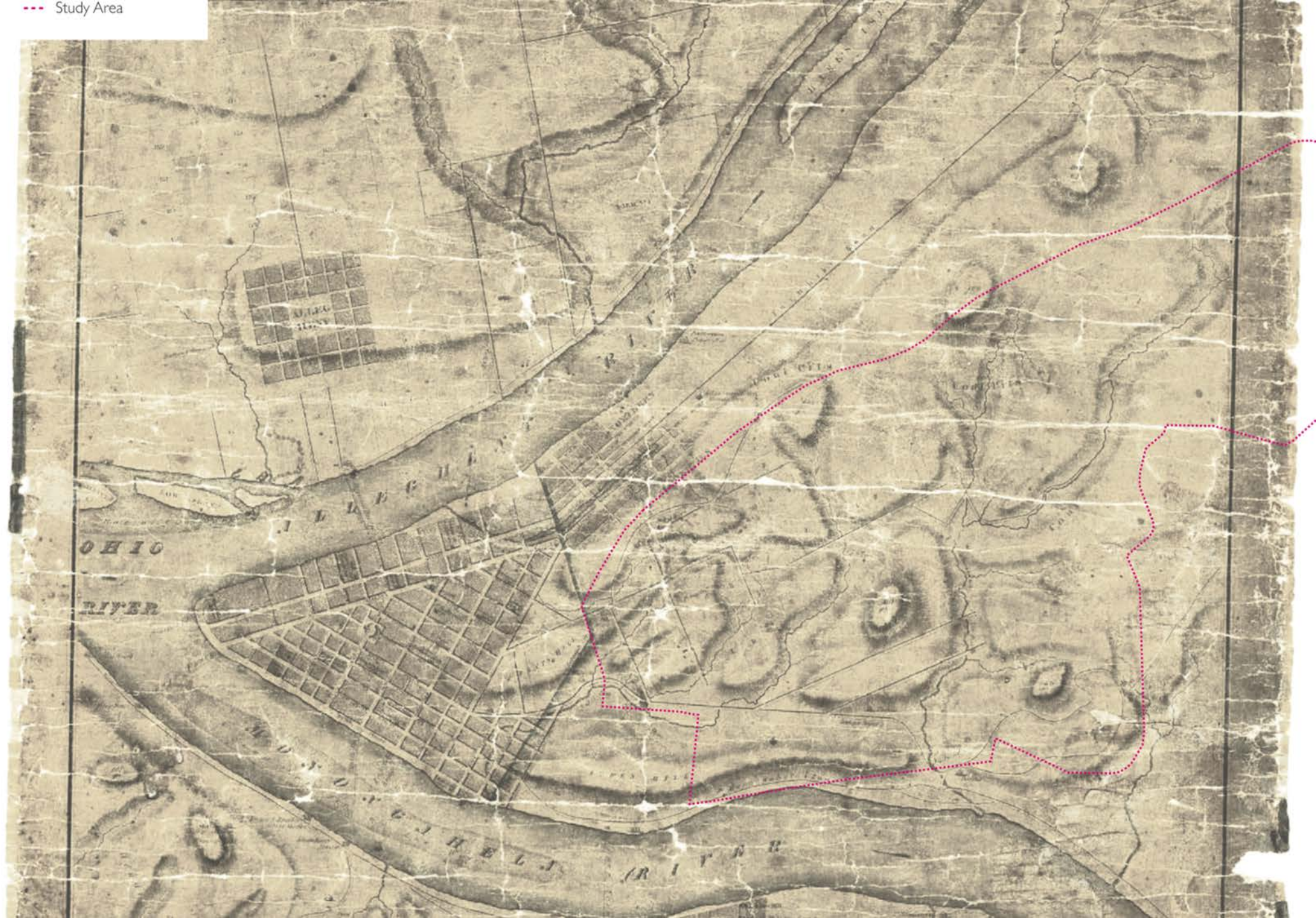
Find the Rivers! Greenprint

September 3, 2009

Find the Rivers! | Pittsburgh Park Conservancy
Hood Design | Arup | Studio for Spatial Practice



THE HILL(





Hill District - Stairs

Map data source: Real Estate Plat-Book of the City of Pittsburgh 1923 Volume 1 - Central Pittsburgh: Wards 1-6 and 9, University of Pittsburgh Hopkins Maps Collection **draft 08|10|09**

Find the Rivers! | Pittsburgh Park Conser-
hood Design | Arup | Studio for Spatial Prac-



GREENPRINT Woods

Find the Rivers! | Pittsburgh Parks Conservancy
Hood Design | Arup | Studio for Spatial Practice



GREENPRINT Woods | Parks

Find the Rivers! | Pittsburgh Parks Conservancy
Hood Design | Arup | Studio for Spatial Practice



GREENPRINT Woods | *Housing*

Find the Rivers! | Pittsburgh Parks Conservancy
Hood Design | Arup | Studio for Spatial Practice



GREENPRINT Woods | *Housing*

Find the Rivers! | Pittsburgh Parks Conservancy
Hood Design | Arup | Studio for Spatial Practice



GREENPRINT Woods | *Circulation*

Find the Rivers! | Pittsburgh Parks Conservancy
Hood Design | Arup | Studio for Spatial Practice



GREENPRINT Woods | Circulation

Find the Rivers! | Pittsburgh Parks Conservancy
Hood Design | Arup | Studio for Spatial Practice



GREENPRINT Woods | Circulation

Find the Rivers! | Pittsburgh Parks Conservancy
Hood Design | Arup | Studio for Spatial Practice



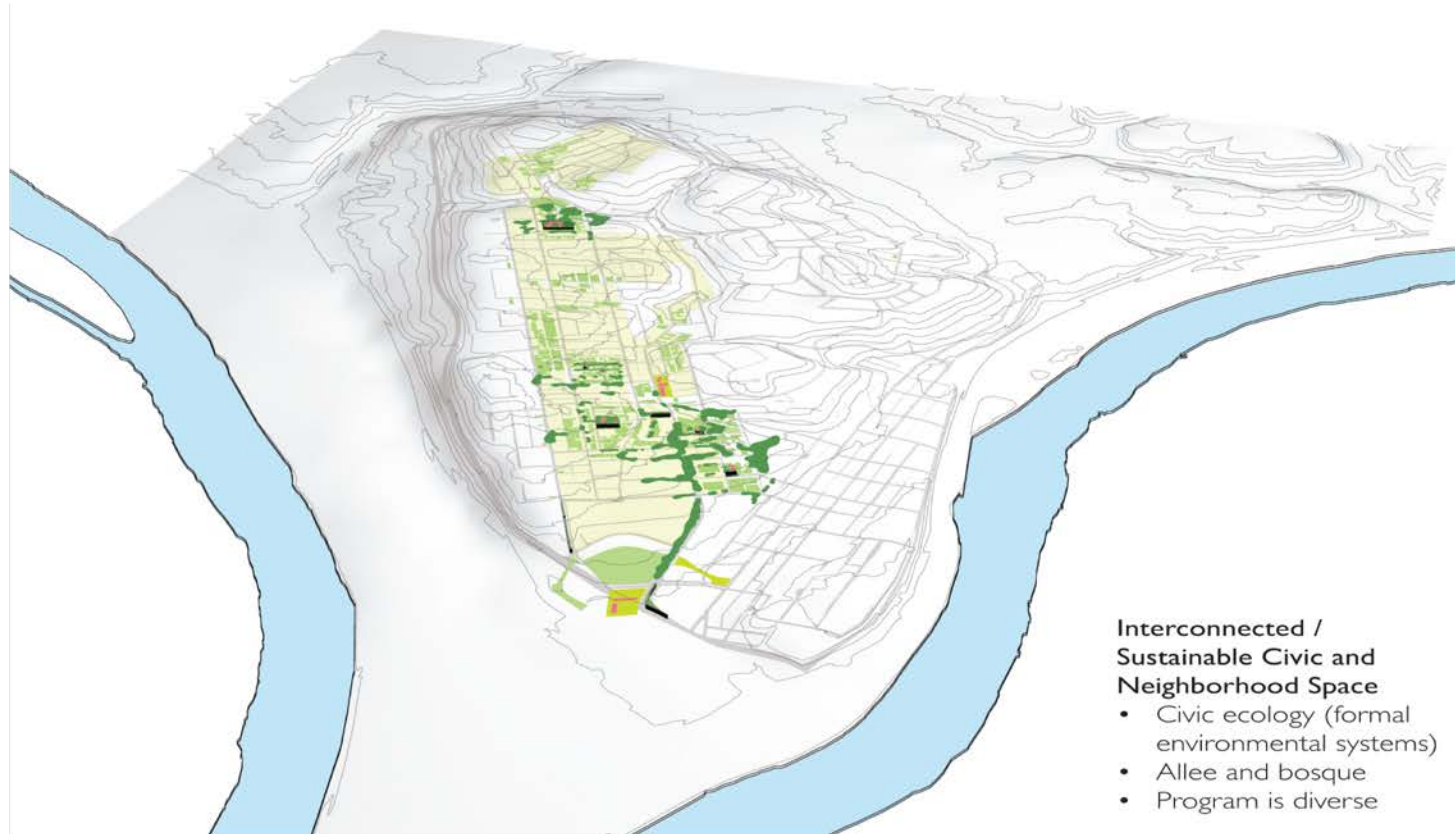
GREENPRINT Village

Find the Rivers! | Pittsburgh Parks Conservancy
Hood Design | Arup | Studio for Spatial Practice



GREENPRINT Village | Parks

Find the Rivers! | Pittsburgh Parks Conservancy
Hood Design | Arup | Studio for Spatial Practice



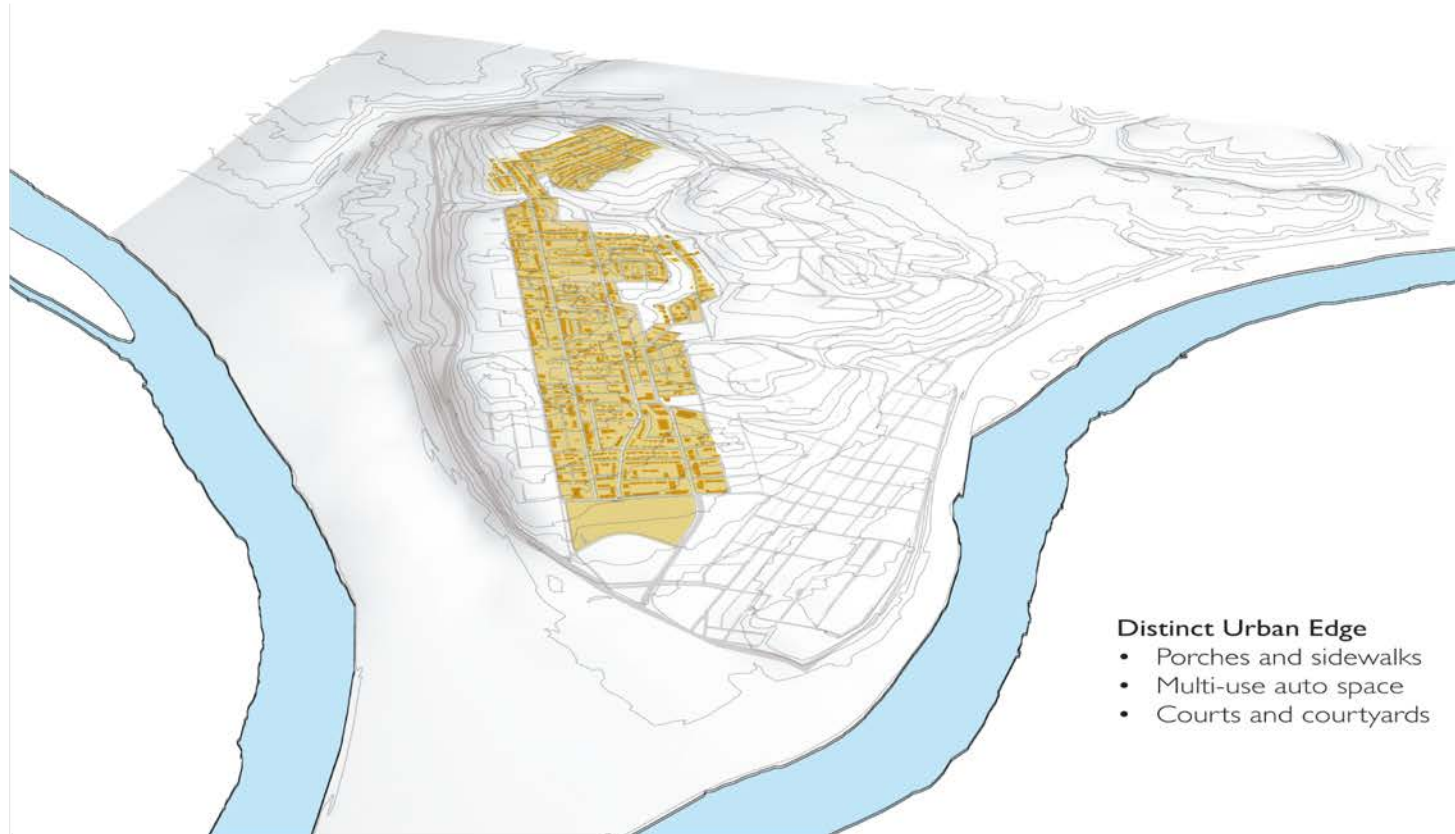
GREENPRINT Village | Parks

Find the Rivers! | Pittsburgh Parks Conservancy
Hood Design | Arup | Studio for Spatial Practice



GREENPRINT Village | Housing

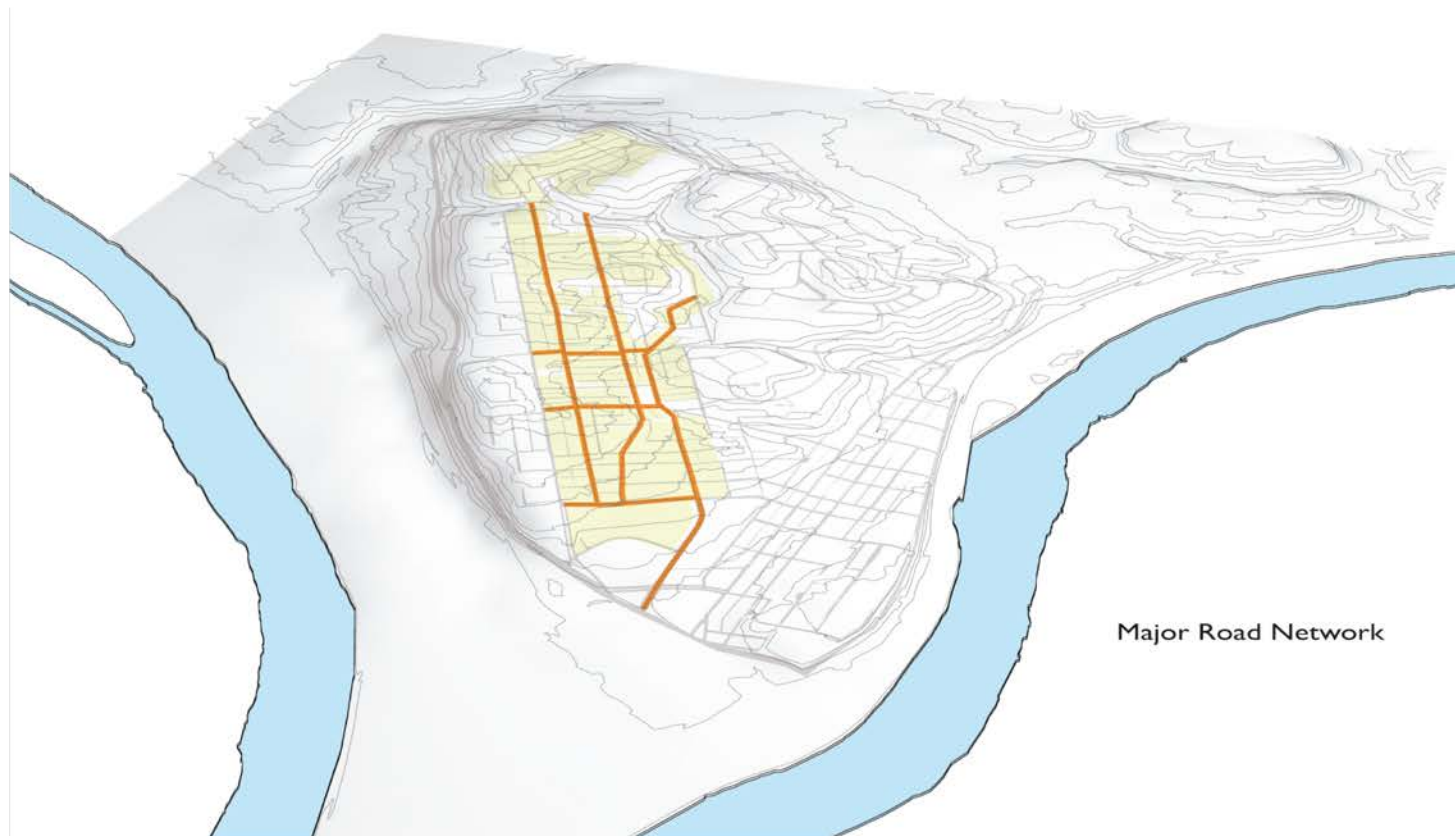
Find the Rivers! | Pittsburgh Parks Conservancy
Hood Design | Arup | Studio for Spatial Practice



- Distinct Urban Edge**
- Porches and sidewalks
 - Multi-use auto space
 - Courts and courtyards

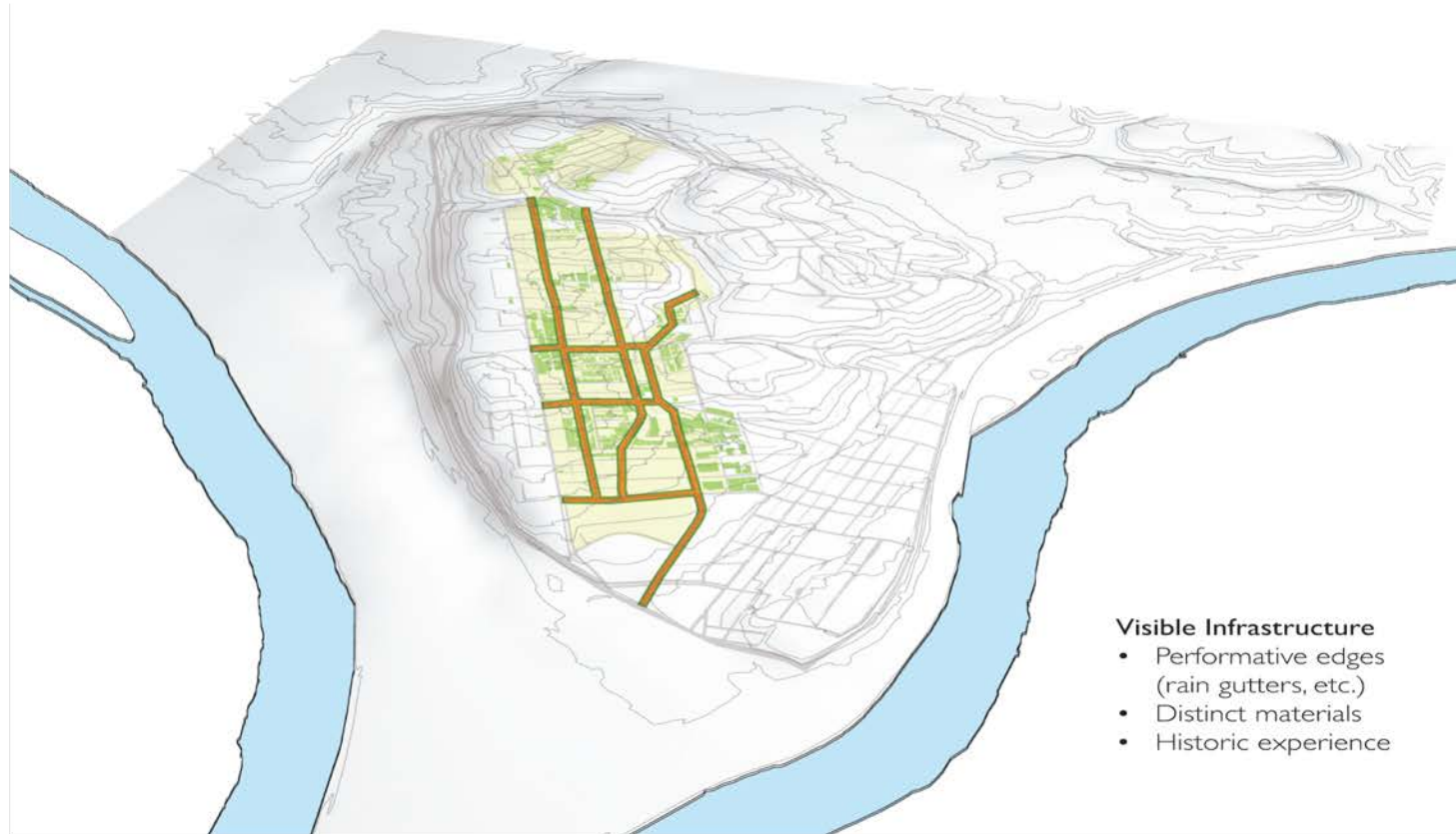
GREENPRINT Village | Housing

Find the Rivers! | Pittsburgh Parks Conservancy
Hood Design | Arup | Studio for Spatial Practice



GREENPRINT Village | Circulation

Find the Rivers! | Pittsburgh Parks Conservancy
Hood Design | Arup | Studio for Spatial Practice



GREENPRINT Village | Circulation

Find the Rivers! | Pittsburgh Parks Conservancy
Hood Design | Arup | Studio for Spatial Practice



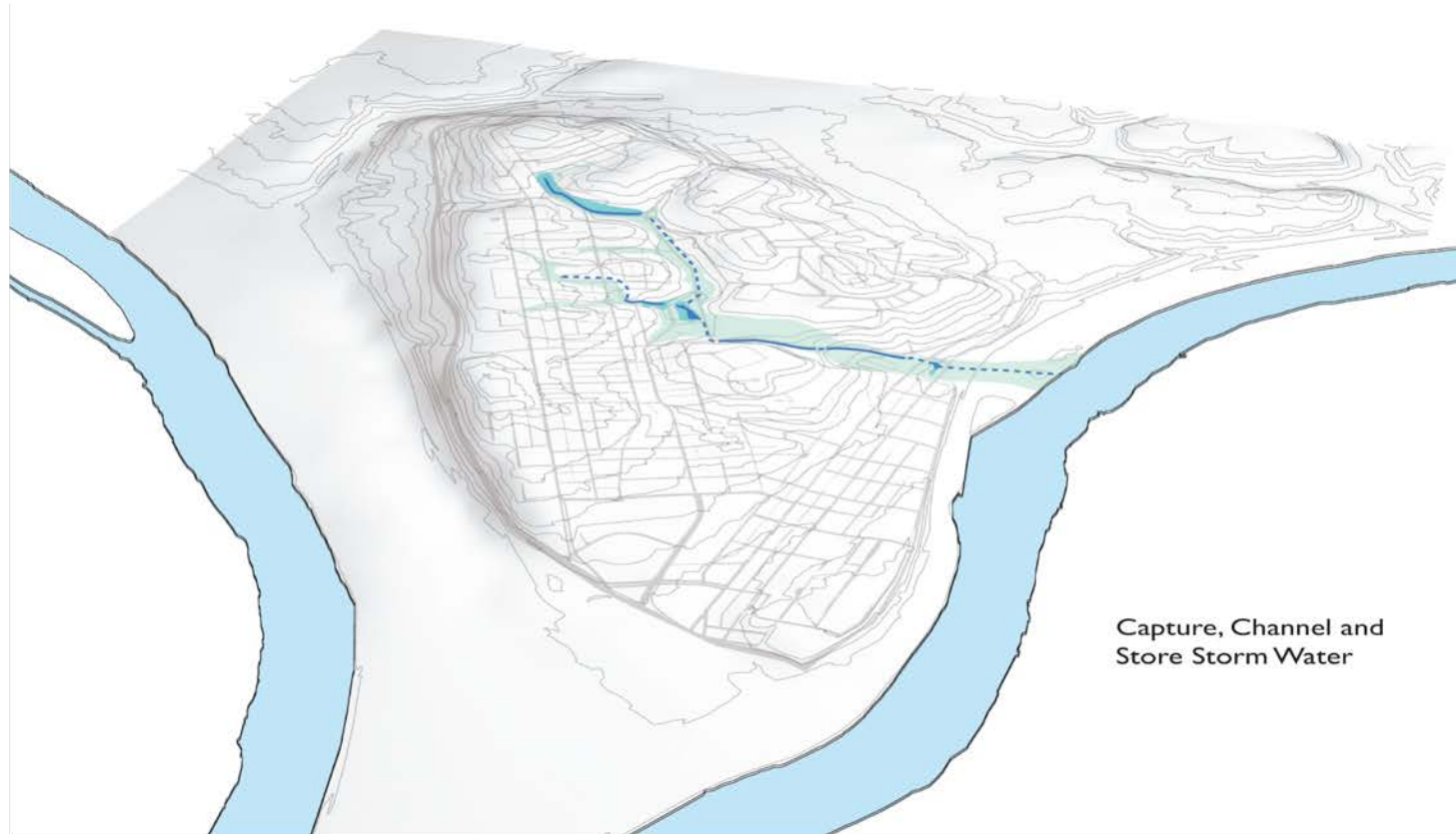
GREENPRINT Village | Parks, Housing & Circulation

Find the Rivers! | Pittsburgh Parks Conservancy
Hood Design | Arup | Studio for Spatial Practice



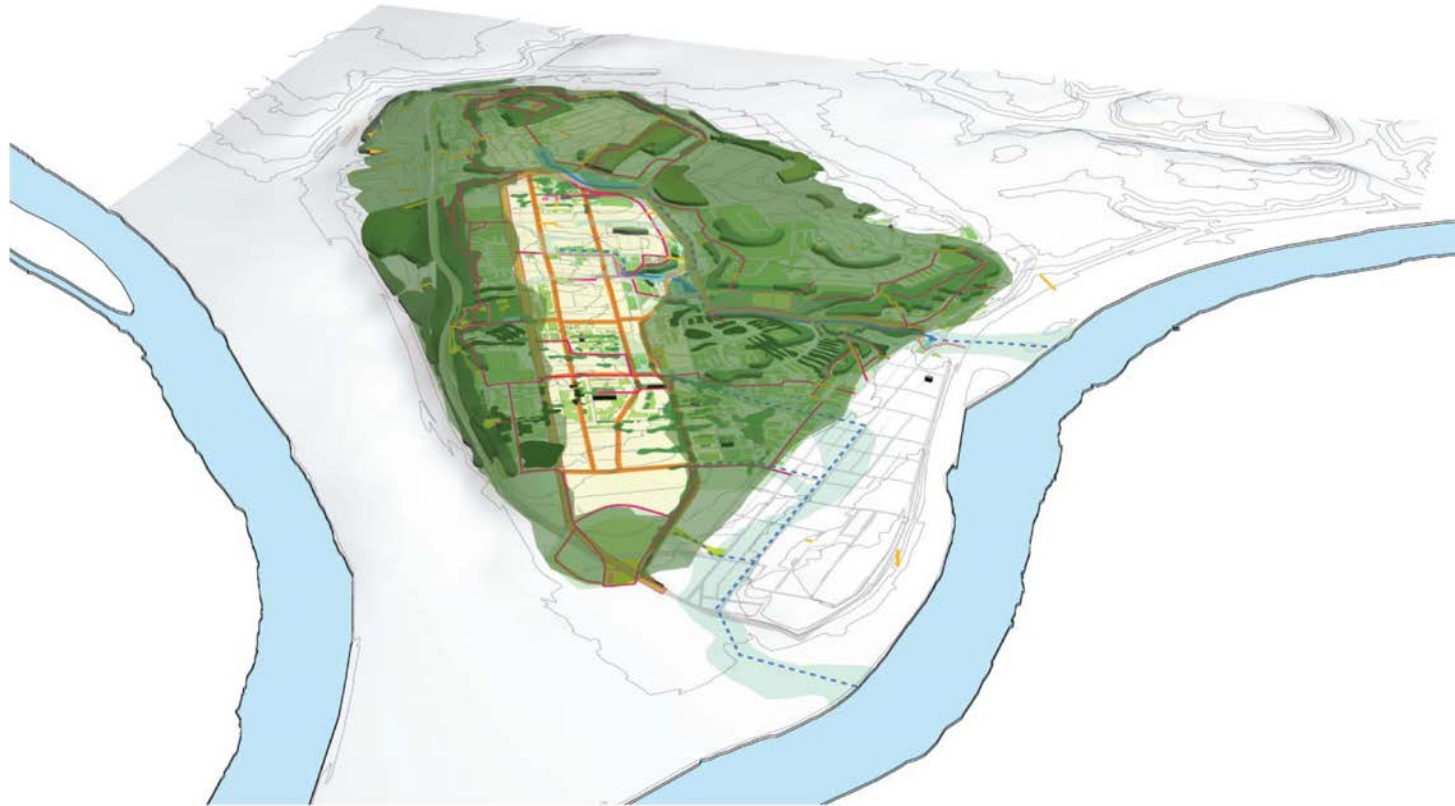
GREENPRINT Village | Parks, Housing & Circulation

Find the Rivers! | Pittsburgh Parks Conservancy
Hood Design | Arup | Studio for Spatial Practice



GREENPRINT Conveyance | *Ponds/Streams*

Find the Rivers! | Pittsburgh Parks Conservancy
Hood Design | Arup | Studio for Spatial Practice



GREENPRINT Woods, Village & Conveyance

Find the Rivers! | Pittsburgh Parks Conservancy
Hood Design | Arup | Studio for Spatial Practice













Photo by Larry Rippel

June 15, 2010 Public Roll-out Exhibition and Barbeque



Photo by Larry Rippel



Photo by Larry Rippel



Photo by Larry Rippel

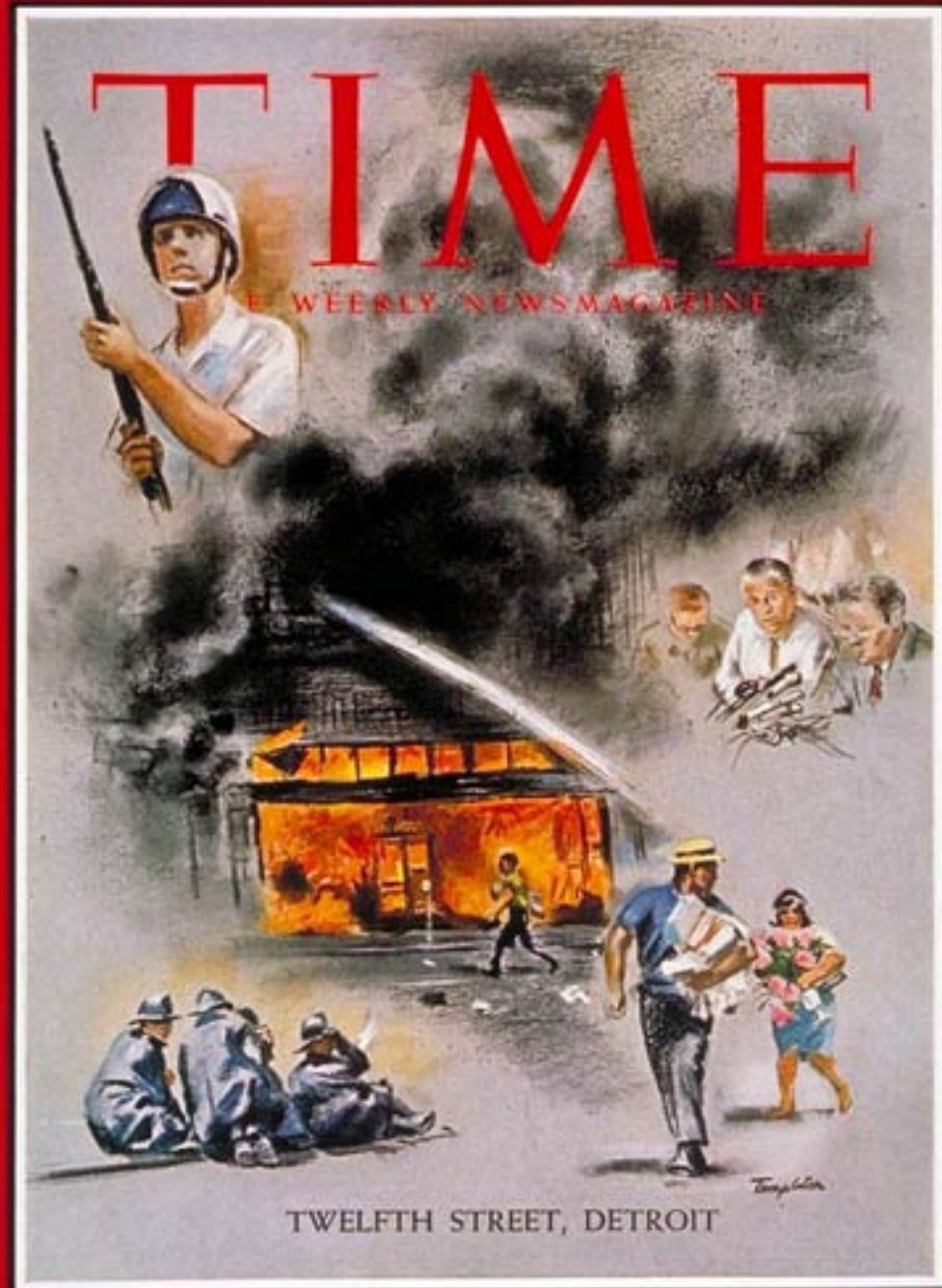


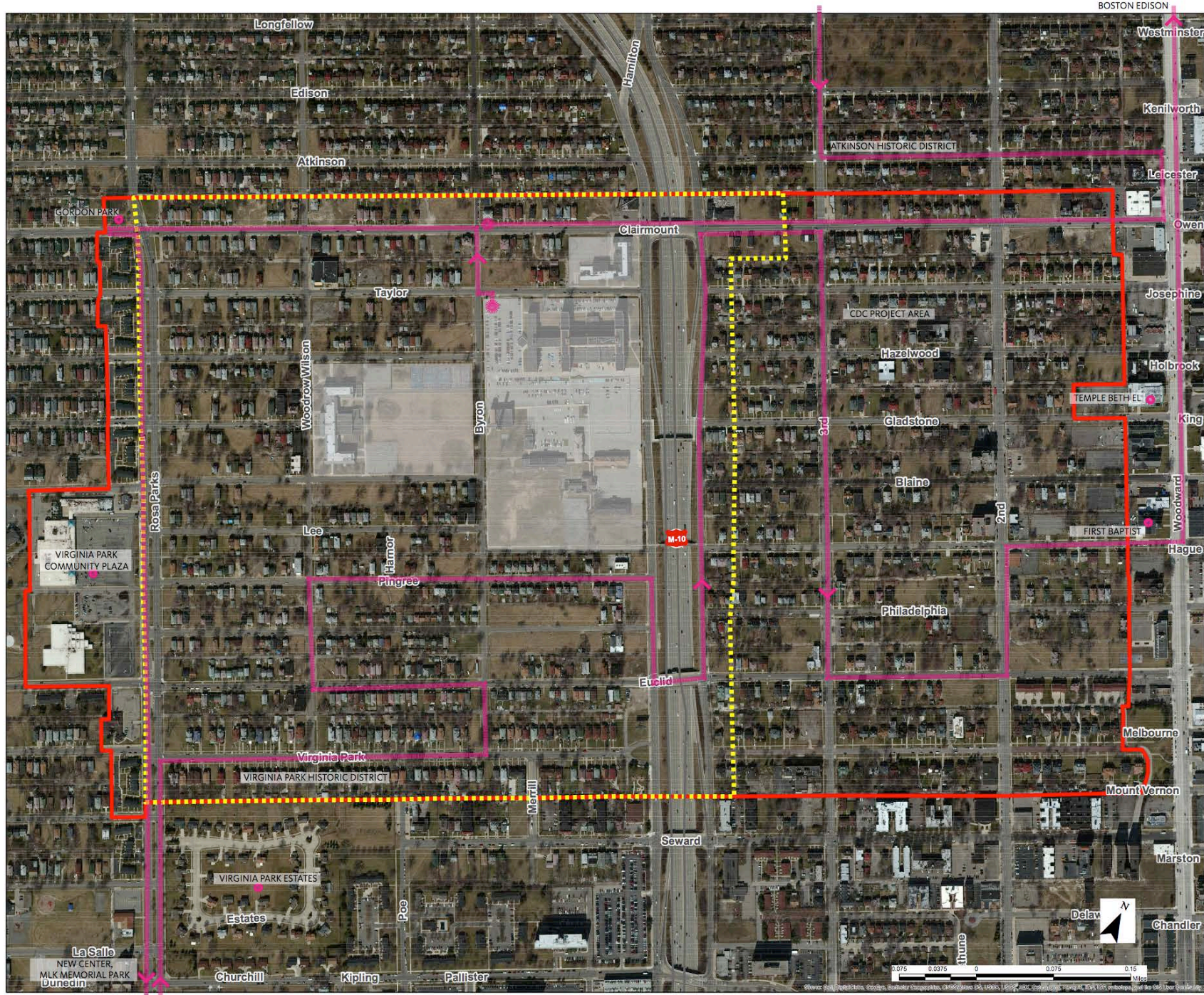
Photos by Larry Rippel



Detroit Historical Society







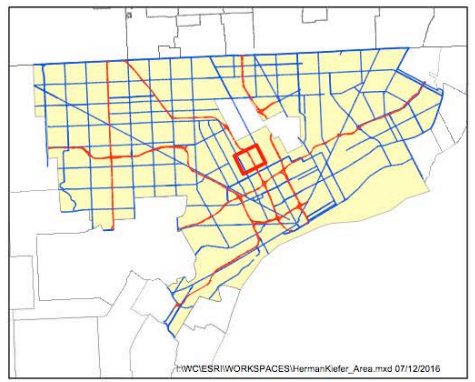
Rosa Parks - Clairmont Study Area

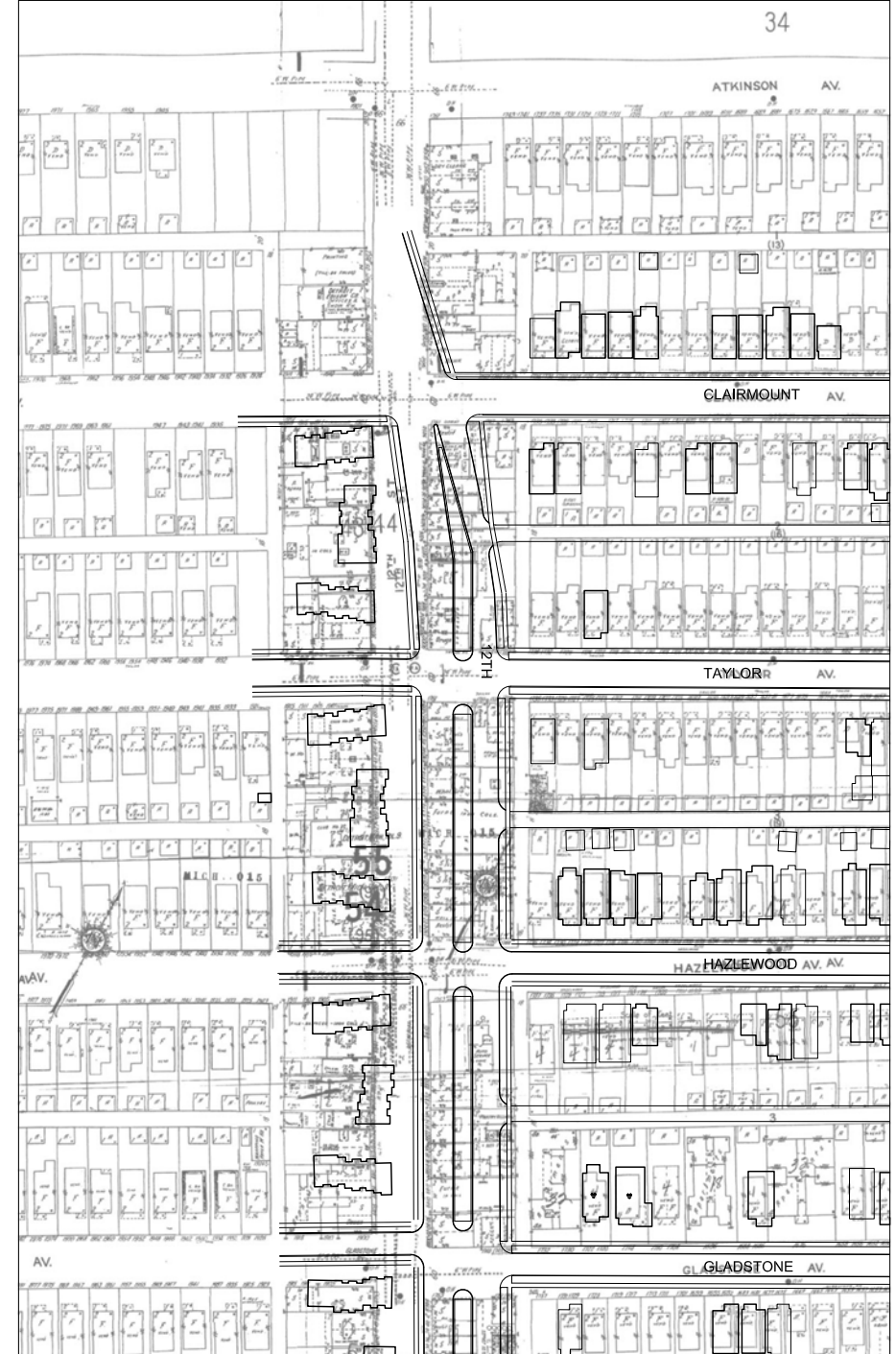
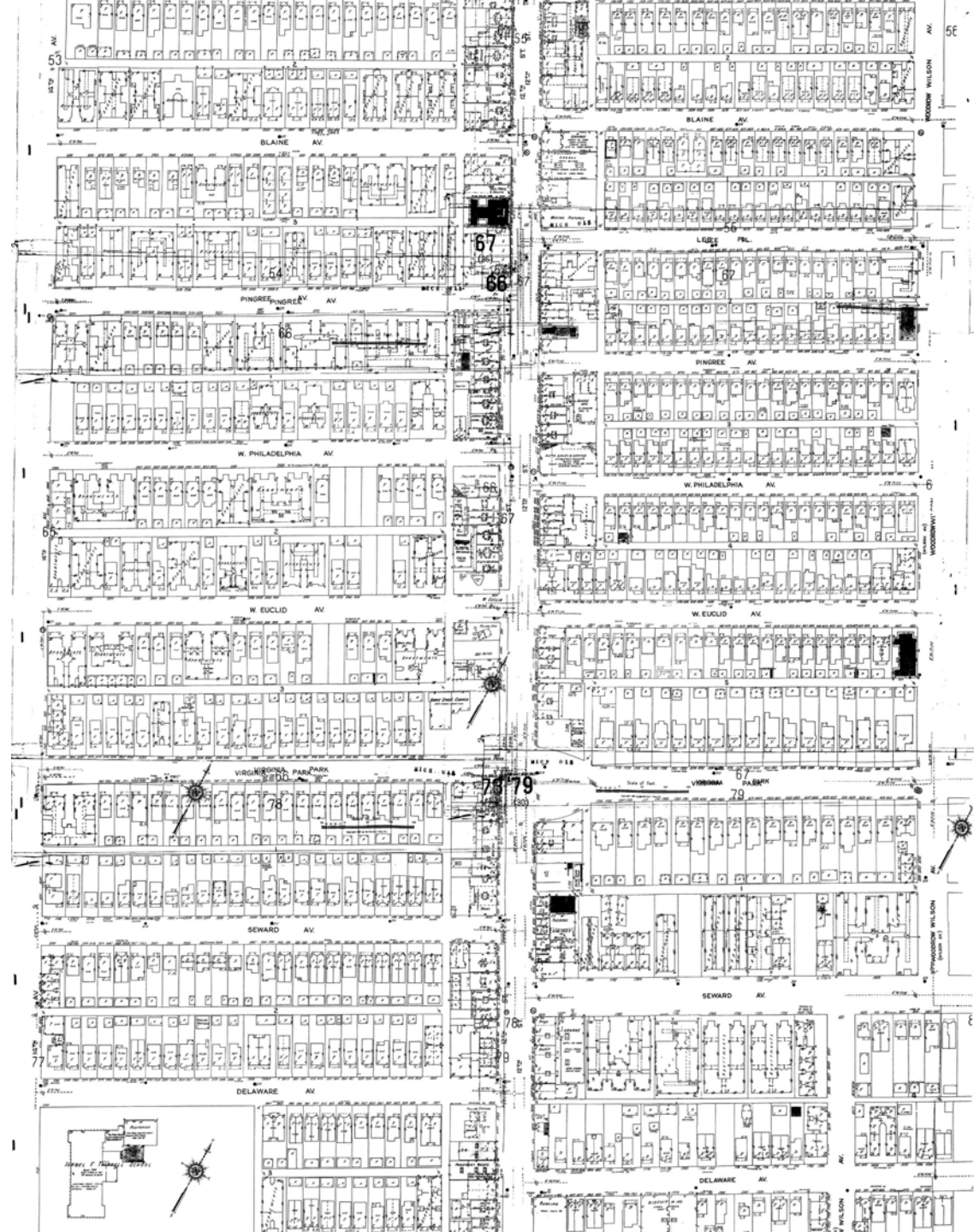
- Herman Kiefer Development Site
- Land Stewardship Plan
- Rosa Parks-Clairmont Study Area

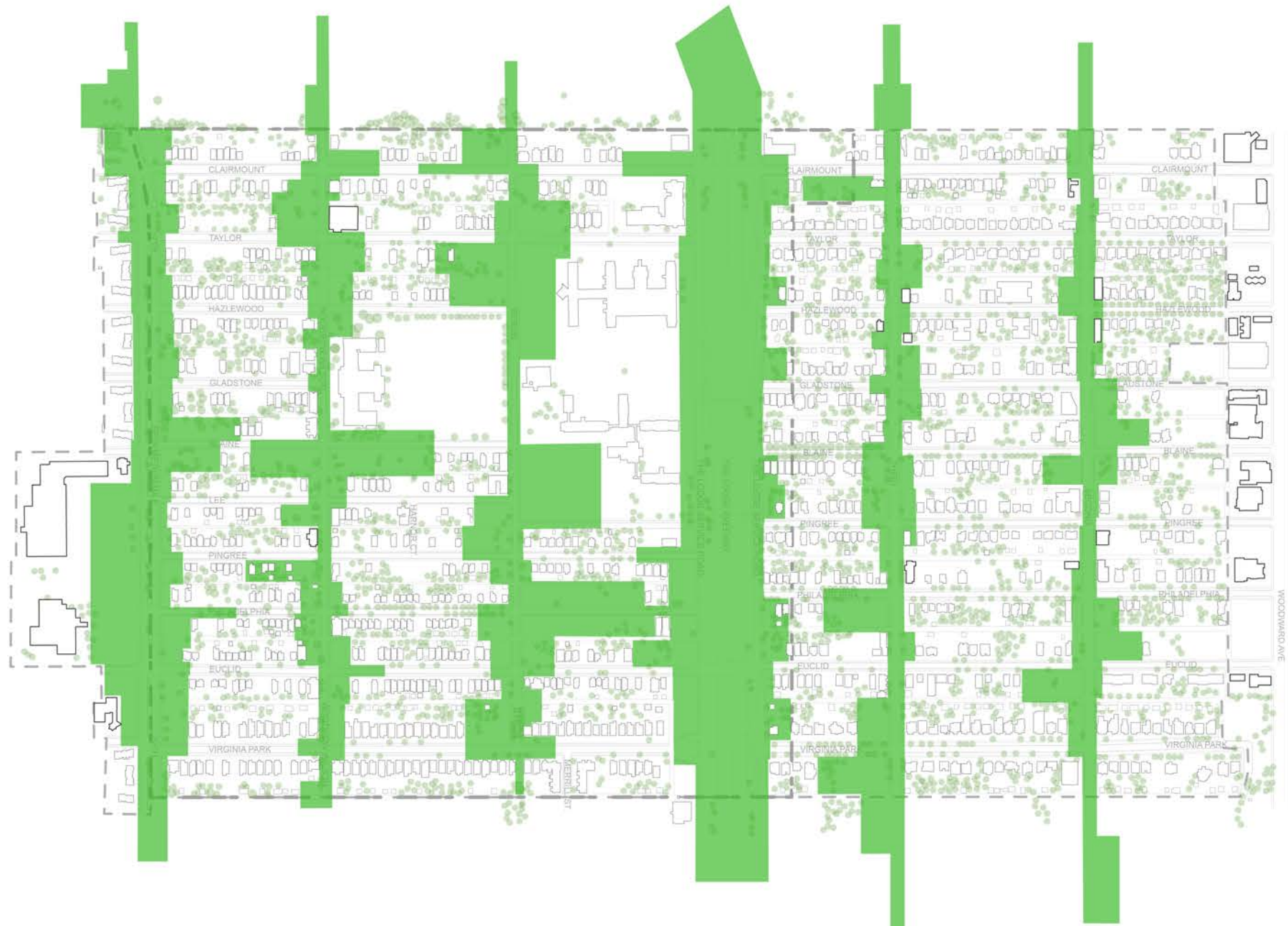


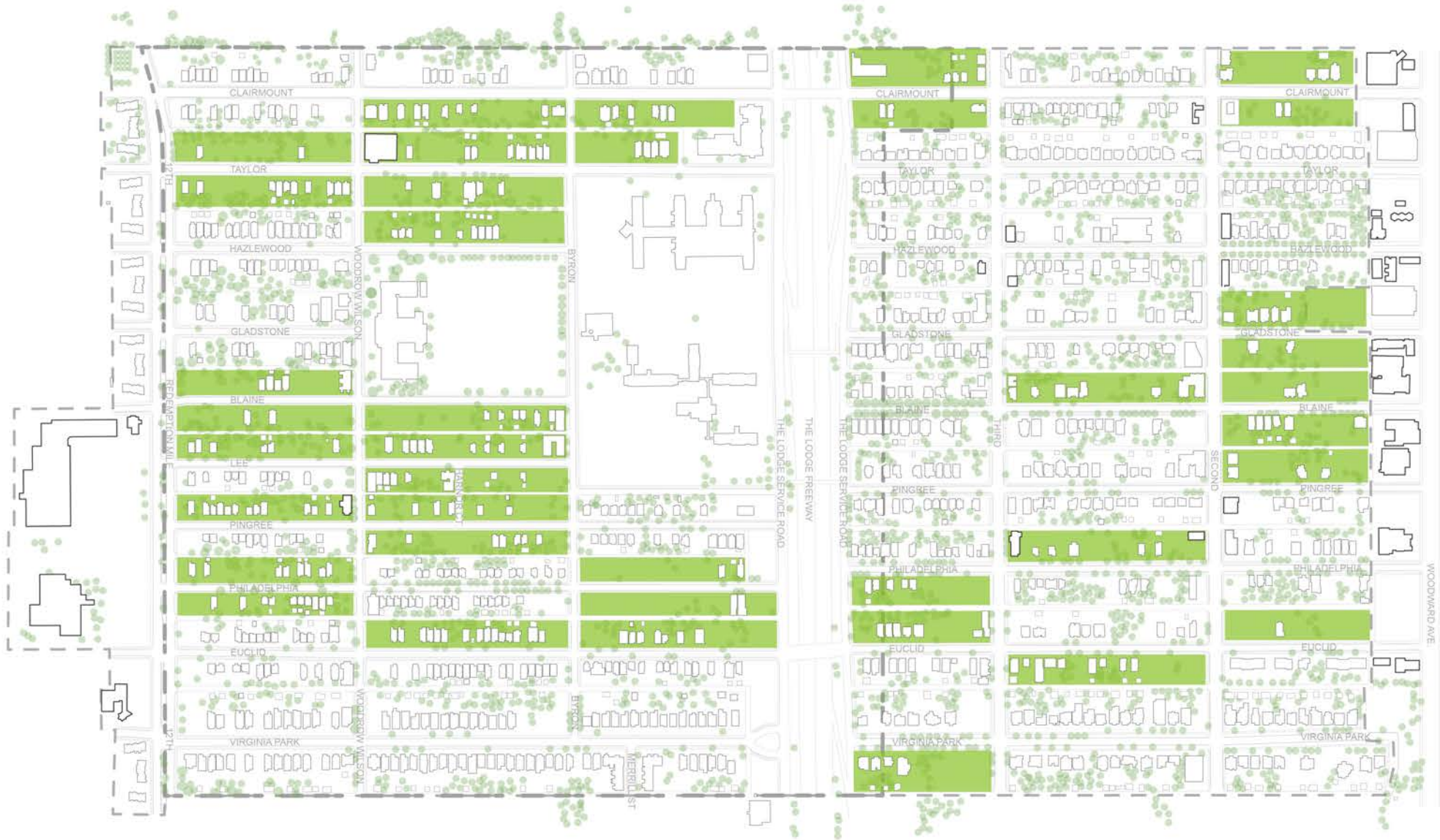
City of Detroit
Planning and Development Department
Planning Division
Coleman A. Young Municipal Ctr.
2 Woodward Ave. Suite 808
Detroit, Michigan 48226
Phone: (313) 224-1421
Fax: (313) 224-1310

Rosa Parks - Clairmont









CLAIRMOUNT AVE.

- ARTIST WORK HOUSES
- ART HOUSES
- SCULPTURE YARDS

HISTORIC ALGIERS MOTEL

BRICK PAVING IN LAWN
REFERENCES THE HISTORIC
FOOTPRINT OF THE ALGIERS
MOTEL

GORDON PARK

EXISTING PARK
CONNECTED TO
12TH STREET
(ROSA PARKS
BLVD)

Herman Kiefer Development

ROSA PARKS BLVD.

- ONE-MILE PLANTING
- COMMUNITY CENTER
- STREET PAINTING
- COMMUNITY HOUSES
- MEETING PLACES

HISTORIC VIRGINIA PARK ST.

- STREET PRESERVATION
- BUILDING PRESERVATION
- TREE CANOPY

Joseph Walker Williams Center

To Hitsville USA & MLK Plaza



Home



**Bare
Lot**



**Manicured
Lot**



Meadow



Woodland



Hedgerow

RE-USE-IT CENTER

BUILDING SUPPLY STORE,
RE-USE-IT CENTER, HARDWARE
STORE, GARDEN SUPPLY

PARKING

PARKING SPACES
PROVIDED AT REAR
OF LOT

ALLEY

NEW PAVING
INSTALLED IN ALLEY
TO FULL LENGTH OF
THE BLOCK

BLOCK CLUB & CAFE

CAFE INCLUDING OUTDOOR
PATIOS FUNCTIONS ALSO AS THE
BLOCK CLUB HEADQUARTERS

MEADOW LANDSCAPE

MEADOW LANDSCAPE MATURES, AND
REQUIRES BI-ANNUAL CUTTING IN THE
SPRING AND FALL

GAME TABLES

CHESS TABLES NEXT
TO THE SIDEWALK

MATERIALS YARD

COVERED CANOPY FOR BUILDING MATERI-
ALS

SITE TREES

UNUSED NURSERY
TREES ALLOWED TO
GROW AND MATURE
AS SHADE TREES
ON-SITE

STREET TREES

TREES PLANTED 25 FEET
ON-CENTER IN BOULEVARD
PLANTING STRIP.

SIGNAGE LIGHTS

LIGHTS POWERED
BY SOLAR ARRAY.

RAIN GARDEN

60% OF GREENWAY LAND
SCAPE TO BE USED FOR
STORMWATER INFILTRATION.

SOLAR LIGHTING STRUCTURES

ACT AS WAYFINDING ALONG PATHS,
AND GATEWAY ELEMENTS TO THE
NEIGHBORHOOD.

50 FEET MINIMUM GREENWAY



108'

OPENING

NURSERY
TREED
EDGE

DOUBLE ROW 1" CALIPER TREE 6' O.C.

SINGLE ROW 2" CALIPER TREE 10' O.C.

EXISTING NEIGHBORING HOUSES

NURSERY HOUSE

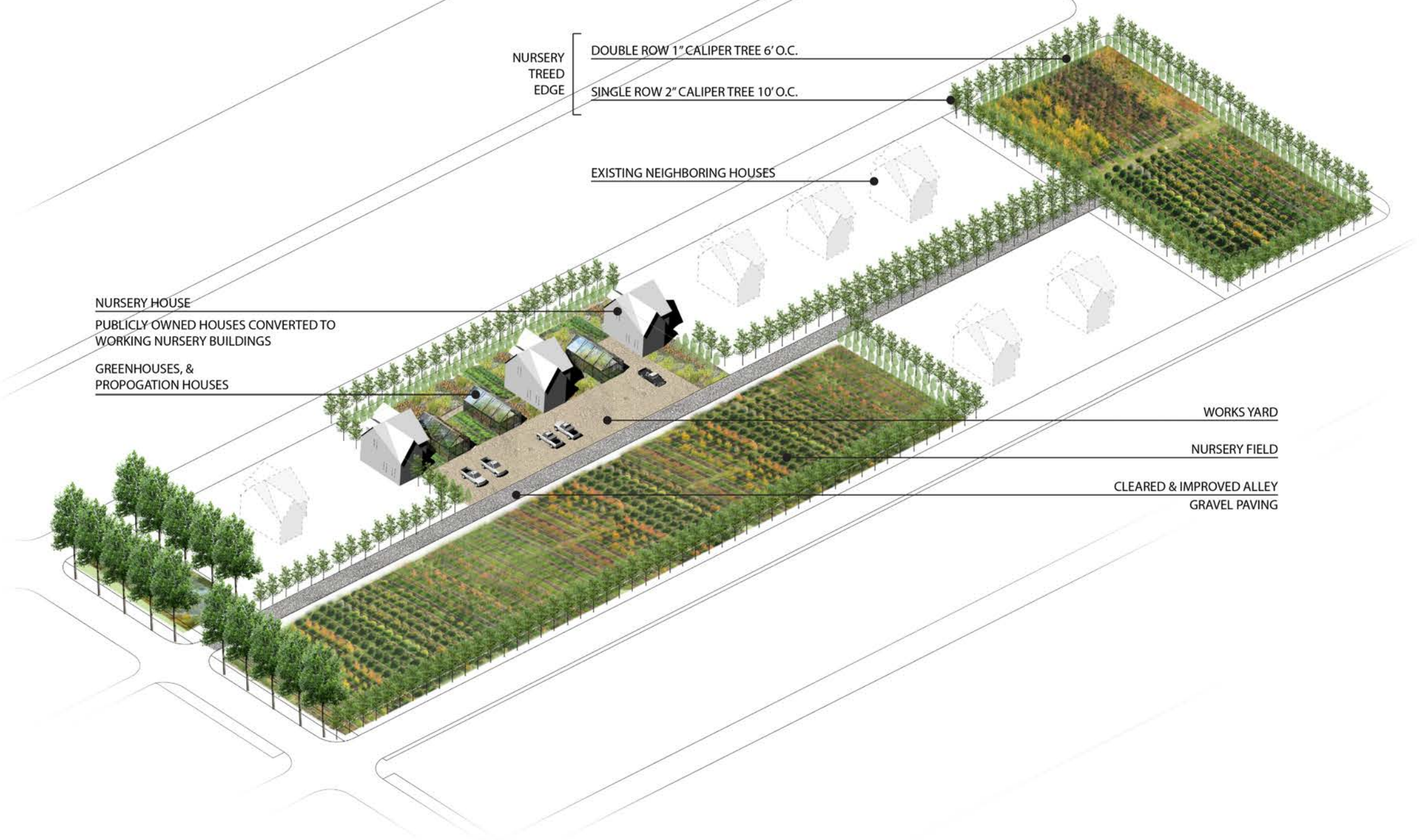
PUBLICLY OWNED HOUSES CONVERTED TO
WORKING NURSERY BUILDINGS

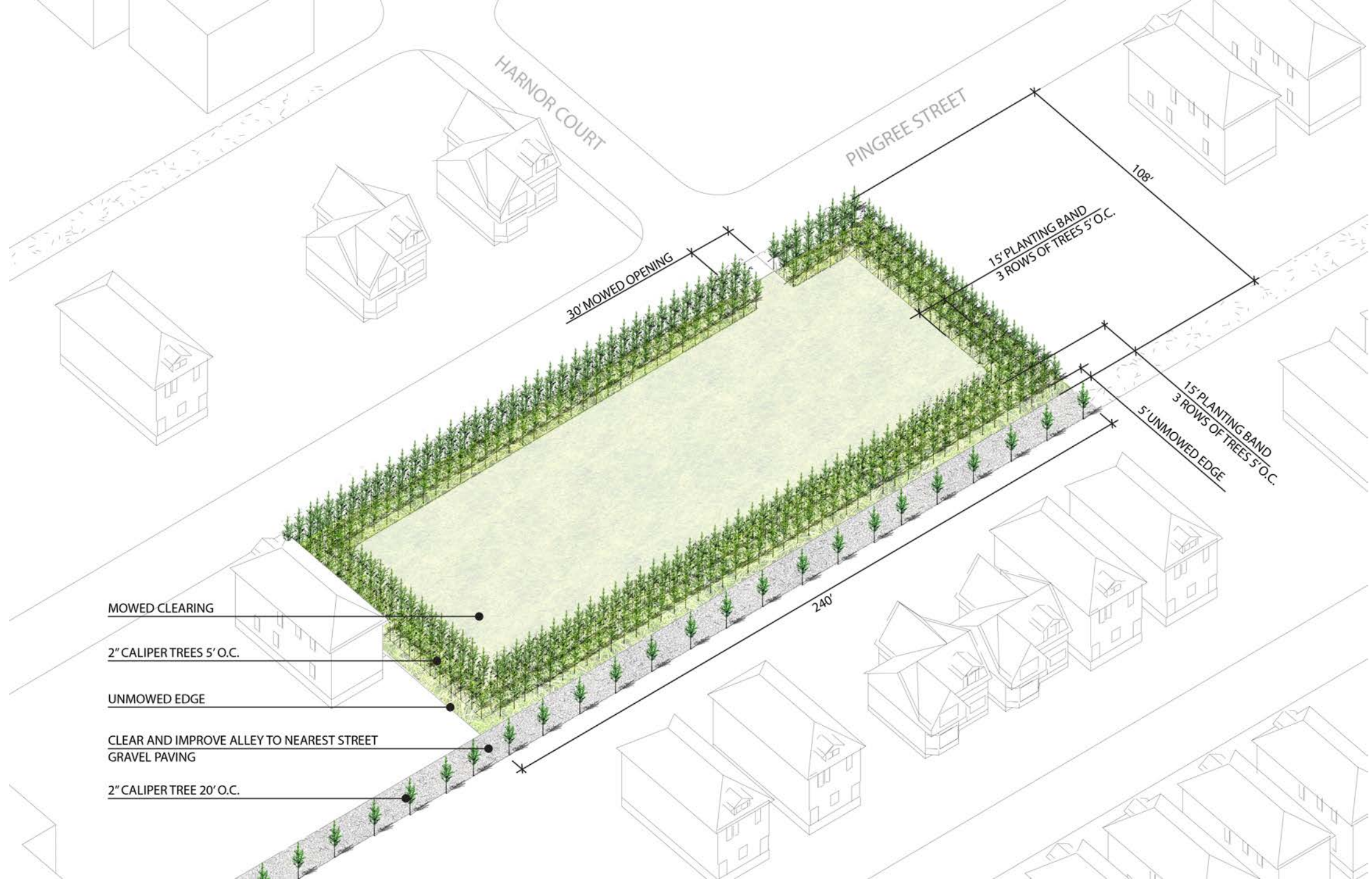
GREENHOUSES, &
PROPOGATION HOUSES

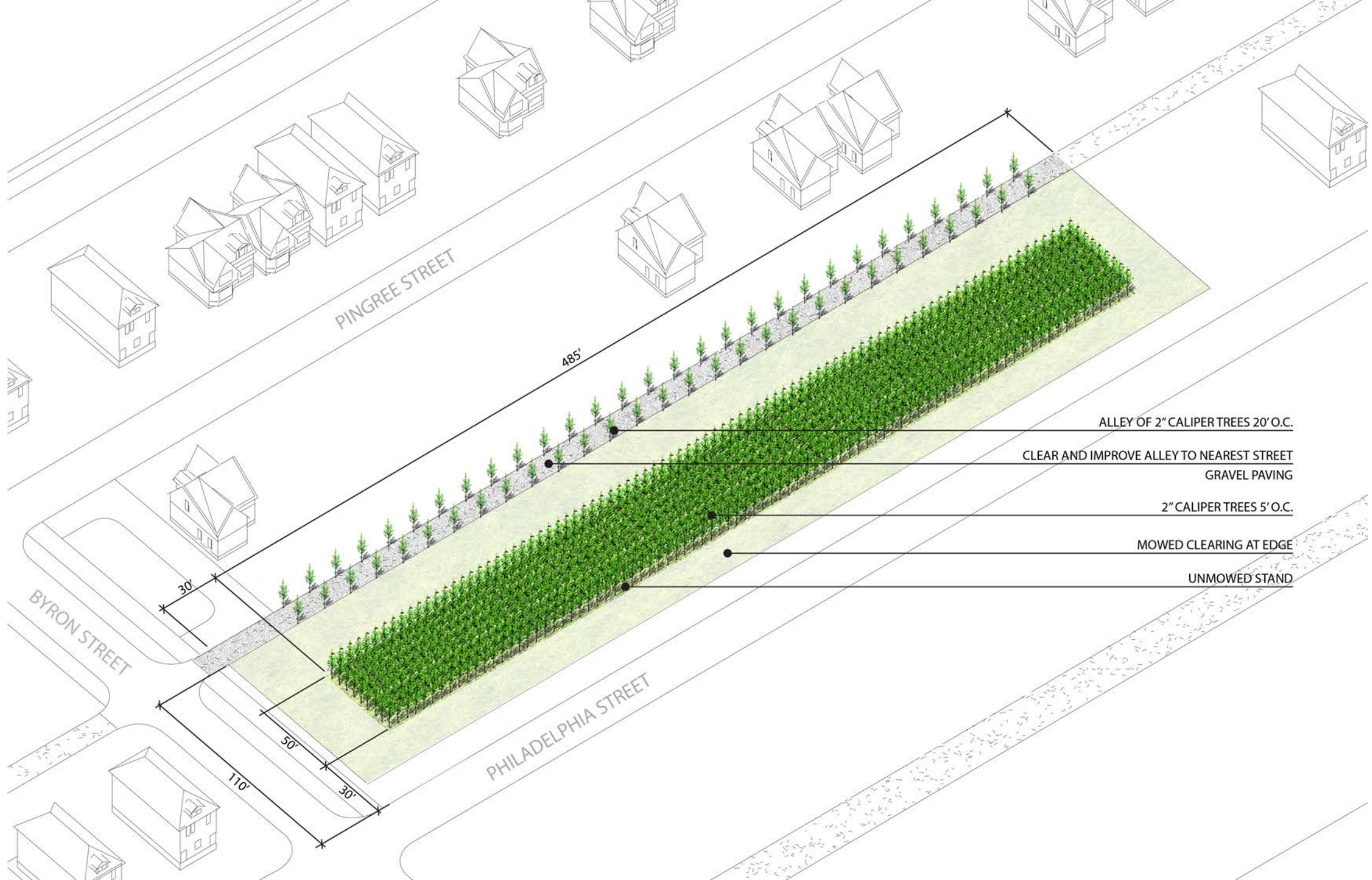
WORKS YARD

NURSERY FIELD

CLEARED & IMPROVED ALLEY
GRAVEL PAVING







PINGREE STREET

BYRON STREET

PHILADELPHIA STREET

485'

30'

50'

110'

30'

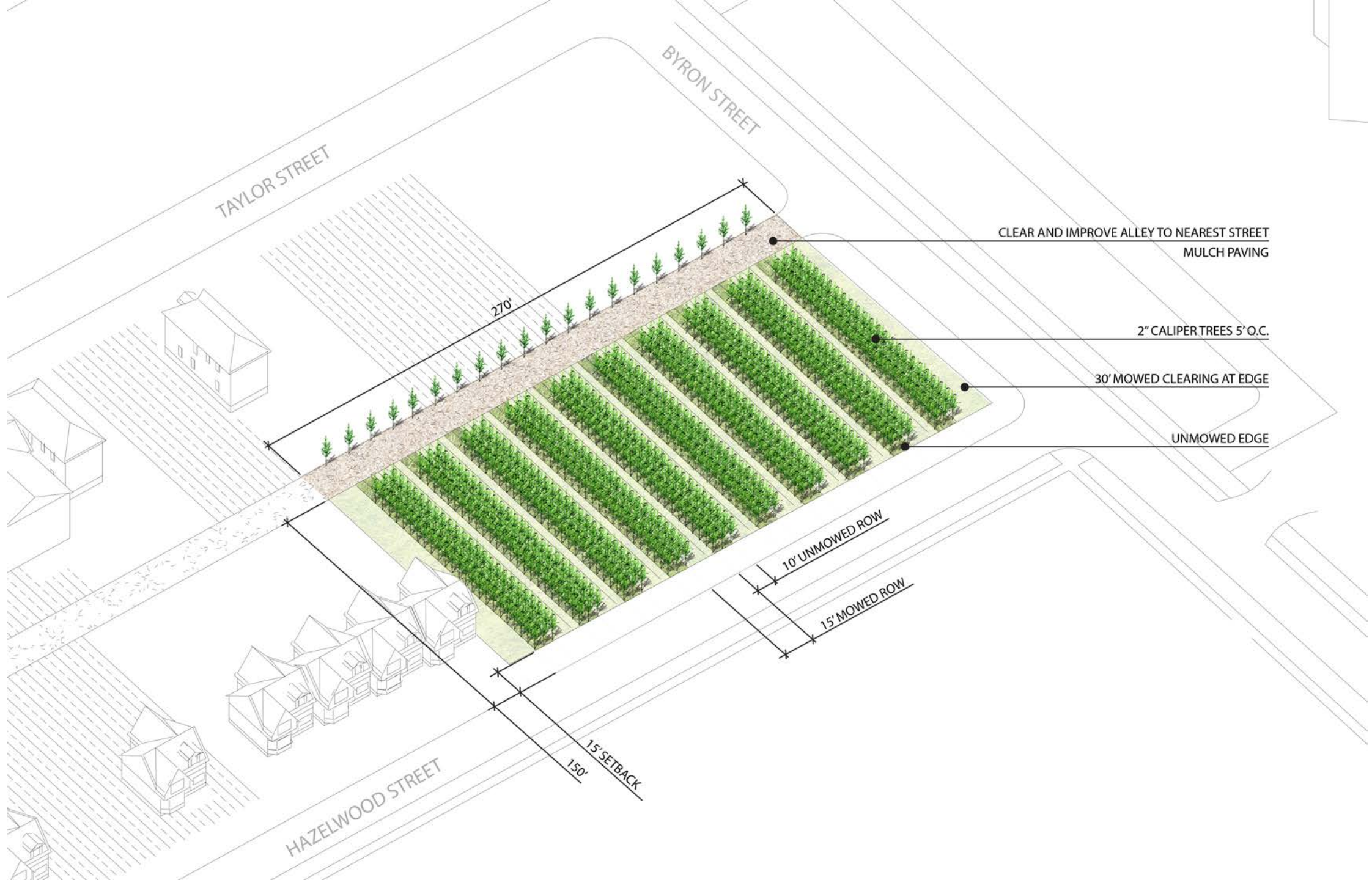
ALLEY OF 2" CALIPER TREES 20' O.C.

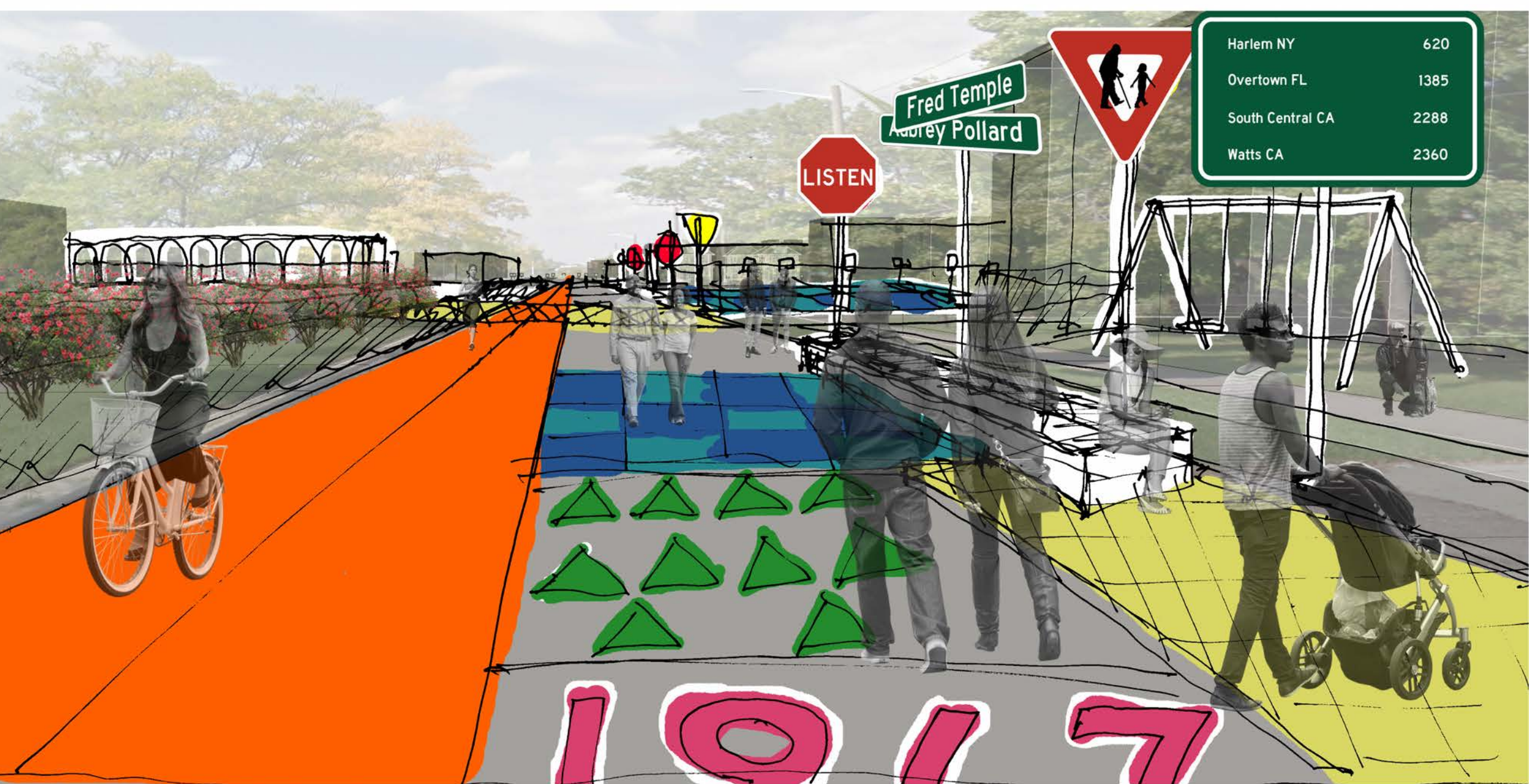
CLEAR AND IMPROVE ALLEY TO NEAREST STREET
GRAVEL PAVING

2" CALIPER TREES 5' O.C.

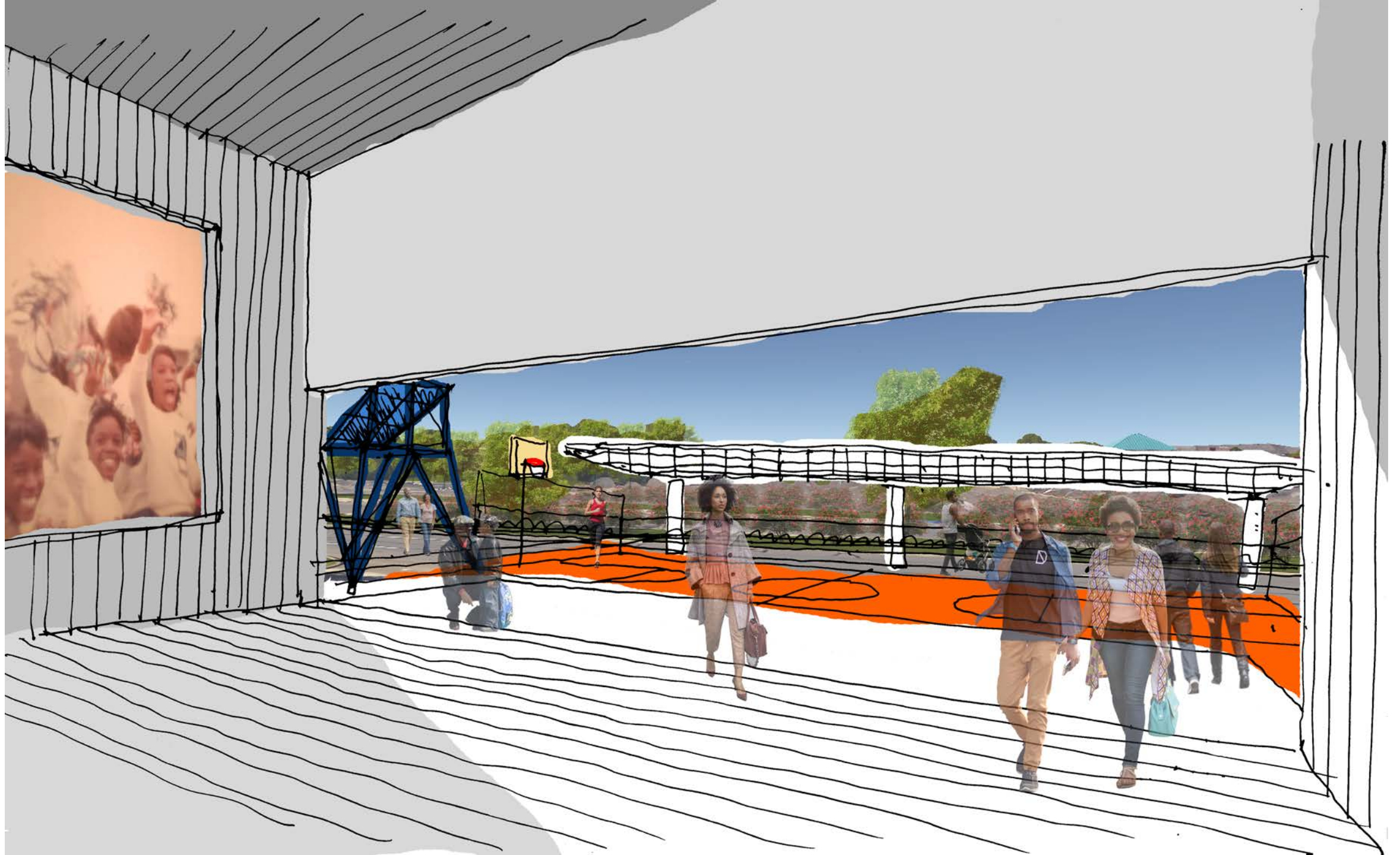
MOWED CLEARING AT EDGE

UNMOWED STAND





Harlem NY	620
Overtown FL	1385
South Central CA	2288
Watts CA	2360





















VIRGINIA PARK PLAZA

PAVED SPACE FOR MARKETS

LAWN SPACE

TREE ALLEY

VIRGINIA PARK COMMUNITY
PLAZA SHOPPING CENTER

JOSEPH WALKER
WILLIAMS CENTER

BIKE LANES

PAINTED CROSSWALK

ROSA PARKS BOULEVARD

NURSERY GARDENS

TREE NURSERY

HERMAN KIEFER
DEVELOPMENT



COMMUNITY HOUSE

ART HOUSE

TAYLOR STREET

HAZELWOOD STREET

GLADSTONE STREET

BLAINE STREET

VIRGINIA PARK PLAZA

MARKETS

MARKET CANOPY

TREE ALLEE

VIRGINIA PARK COMMUNITY
PLAZA SHOPPING CENTER

JOSEPH WALKER
WILLIAMS CENTER

STREET PRINTING OPEN TO PEDESTRIAN AND BIKE

SPORT FIELD

SCULPTURE GARDEN

NEIGHBORHOOD GATEWAY

ROSA PARKS BOULEVARD

CLAIMOUNT AVENUE

DEVELOPMENT

NURSERY GARDENS

TREE NURSERY

NURSING HOUSE

GREEN HOUSES

BYRON STREET

MULTI-USE PATH

WOODROW WILSON STREET

PLAZA

ROSA PARKS BOULEVARD

VIRGINIA PARK STREET

LIFEWAYS PLAN

Changing the nomenclature from community design, it is possible to think more about the way of life in the community.

The spaces and places that people maintain, conserve, or preserve reinforce a particular way they want to live. Within the American diaspora, this “way of life” can be idiosyncratic, countercultural, or normative. A “way of life” is truly American, suggesting individual freedom and choice. Reinforcing individualism and collective diversity, it suggests a willingness to validate a diversity of norms and actions of inhabitants. People are constantly engaged in the process of acculturation and assimilation, as opposed to validating differences. Urban

design and planning projects often seek to organize, tidy, and homogenize environments through standards that can be easily understood by all. But if the focus is on lifeways, they encounter diversity and the multiplication of actions/events toward similar environments, objects, and things. Everyday and mundane, commemorative, and community lifeways together argue for “culture” to be central to design, recognizing that places and environments are maintained, sustained, or transformed by the people and bureaucracies that control them.

- OVERCOMING LANDSCAPE OF FEAR
- VISION PLAN
- POTENTIAL SEQUENCING
- WHAT’ NEXT



:: block



:: stripe

t h e B E E R L I N E



L I F E W A Y S P L A N : :

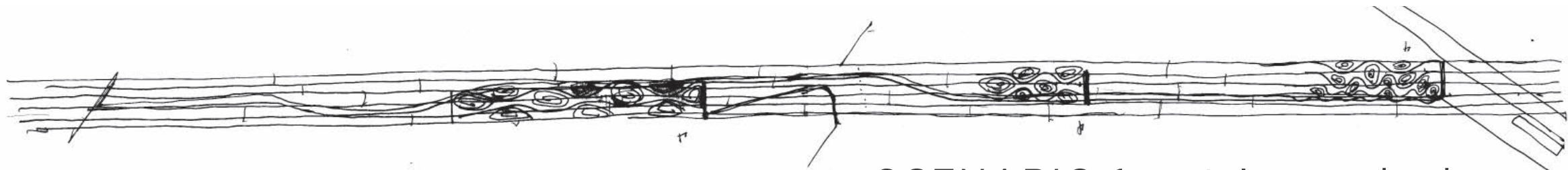
P E R F O R M A T I V E
L A N D S C A P E S

ecological

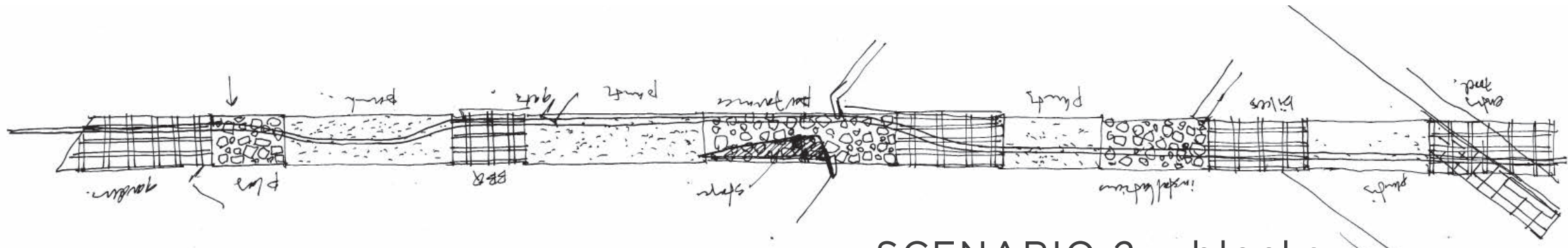
economic

social + cultural

canopy :: ground plane :: vienna crossing :: gates + fences

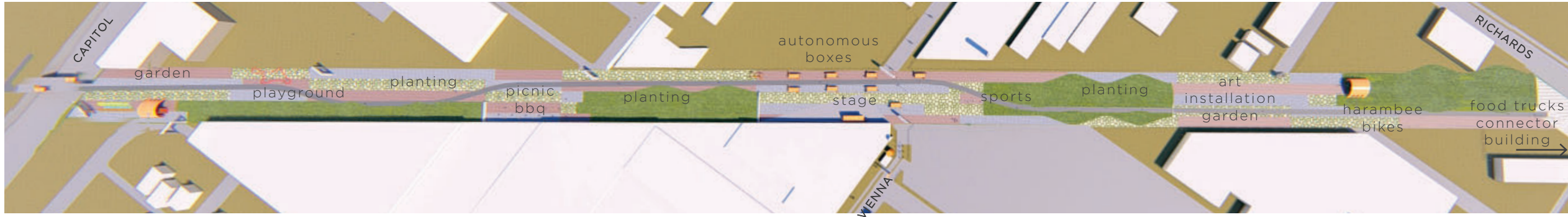


SCENARIO 1 :: stripes + locks

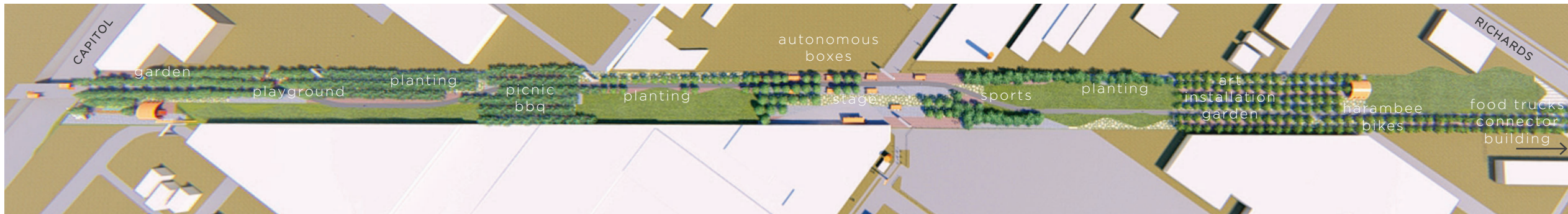


SCENARIO 2 :: blocks

SCENARIO 1 :: stripes + locks

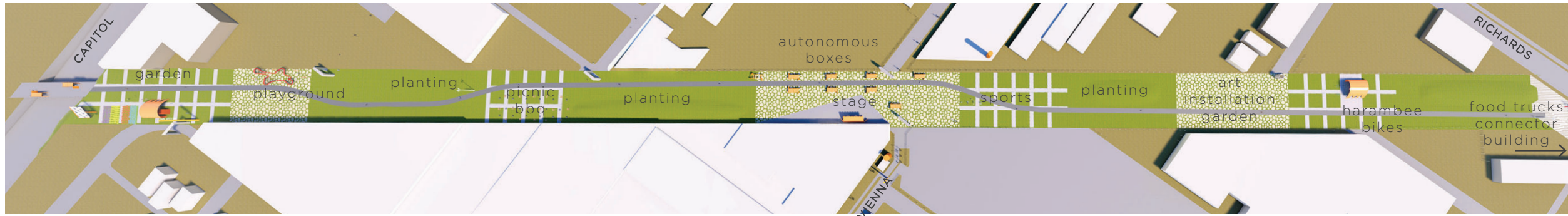


ground



canopy

SCENARIO 2 :: blocks



ground



canopy

OVERCOMING THE LANDSCAPE OF FEAR

ORDINARY :: EXTRAORDINARY



SAFE

::

RISKY



DISINVESTMENT

::

INVESTMENT



STEREOTYPICAL

::

ATYPICAL



FINI